

## Supplementary Materials

### **Performance of acoustic telemetry in relation to submerged aquatic vegetation in a nearshore freshwater habitat**

*Amy A. Weinz<sup>A</sup>, Jordan K. Matley<sup>A</sup>, Natalie V. Klinard<sup>A,B</sup>, Aaron T. Fisk<sup>A</sup> and Scott F. Colborne<sup>C,D</sup>*

<sup>A</sup>Great Lakes Institute for Environmental Research, University of Windsor, Windsor, ON, Canada.

<sup>B</sup>Present address: Department of Biology, Dalhousie University, Halifax, NS, Canada.

<sup>C</sup>Daniel P. Haerther Center for Conservation and Research, Shedd Aquarium, Chicago, IL 60605, USA.

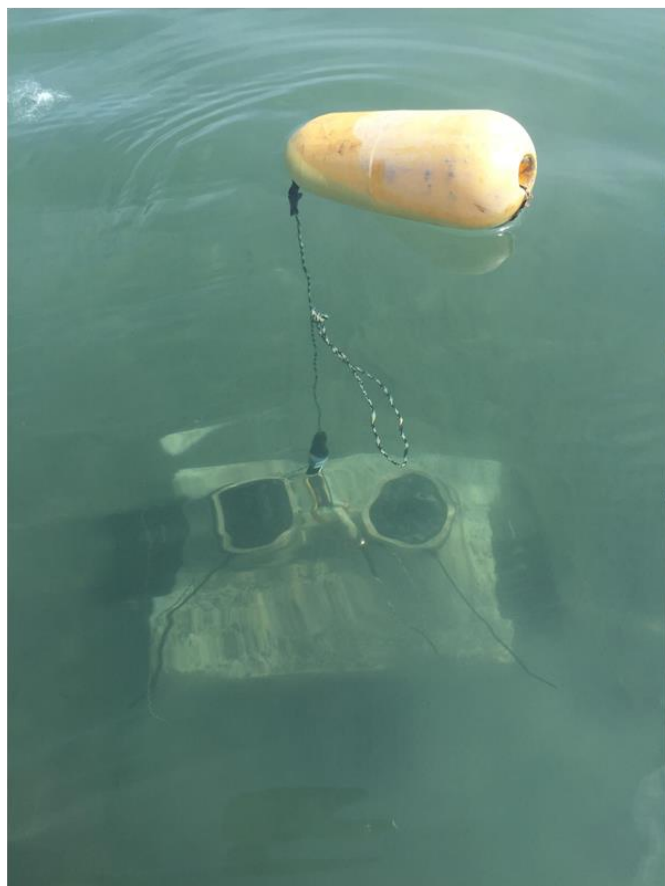
Current address: Department of Wildlife, Fish and Conservation Biology, University of California Davis, Davis, CA 95616, USA.

<sup>D</sup>Corresponding author. Email: [scolbor@gmail.com](mailto:scolbor@gmail.com)

## Supplementary Figures

**Figure S1.** Photographs of an acoustic mooring of the same design used in this study during (a) low vegetation in the spring and (b) peak vegetation during the summer months. Note this is mooring was deployed in a different year from this study and is located approximately 0.5 km from the study site and at a shallower depth of approximately 0.75 m. However, it accurately illustrates the seasonal variability and density of SAV observed at the study site.

(a) June 2016



(b) August 2016



**Figure S2.** The effect of time of day on predicted 6-h detection efficiency in the long-term range test. The category night includes hours 0-6, morning includes 6-12, afternoon includes 12-18, and evening includes 18-24.

