

Supplementary Material

***In vitro* effects of Type I interferons (IFN τ and IFN α) on bovine hepatocytes cultured with or without Kupffer cells**

Kai Josef Endriß^A, Marie Margarete Meyerholz^B, Teresa Fischbach^A, Lutz Brimmers^A, Christiane Pfarrer^C, Christina Deborah Marth^D and Marion Schmicke^{A,E,F}

^AUniversity of Veterinary Medicine Hanover, Clinic for Cattle, Endocrinology, Bischofsholer Damm 15, 30539 Hanover, Germany.

^BClinic for Ruminants with Ambulatory and Herd Health Services, Centre for Clinical Veterinary Medicine, Ludwig-Maximilians-University Munich, Sonnenstraße 16, 85764 Oberschleißheim, Germany.

^CUniversity of Veterinary Medicine Hanover, Anatomy, Bischofsholer Damm 15, 30539 Hanover, Germany.

^DMelbourne Veterinary School, The University of Melbourne, 250 Princes Highway, Werribee, Vic. 3030, Australia.

^EMartin-Luther University Halle-Wittenberg, Faculty of Natural Sciences III, Institute of Agricultural and Nutritional Sciences, Animal Health Management, Theodor-Lieser-Straße 11, 06120 Halle, Germany.

^FCorresponding author. Email: marion.schmicke@landw.uni-halle.de

Figure S1. Inverse phase contrast images of hepatocytes in sandwich culture ...

Figure S2. Inverse phase contrast images of Kupffer cells ...

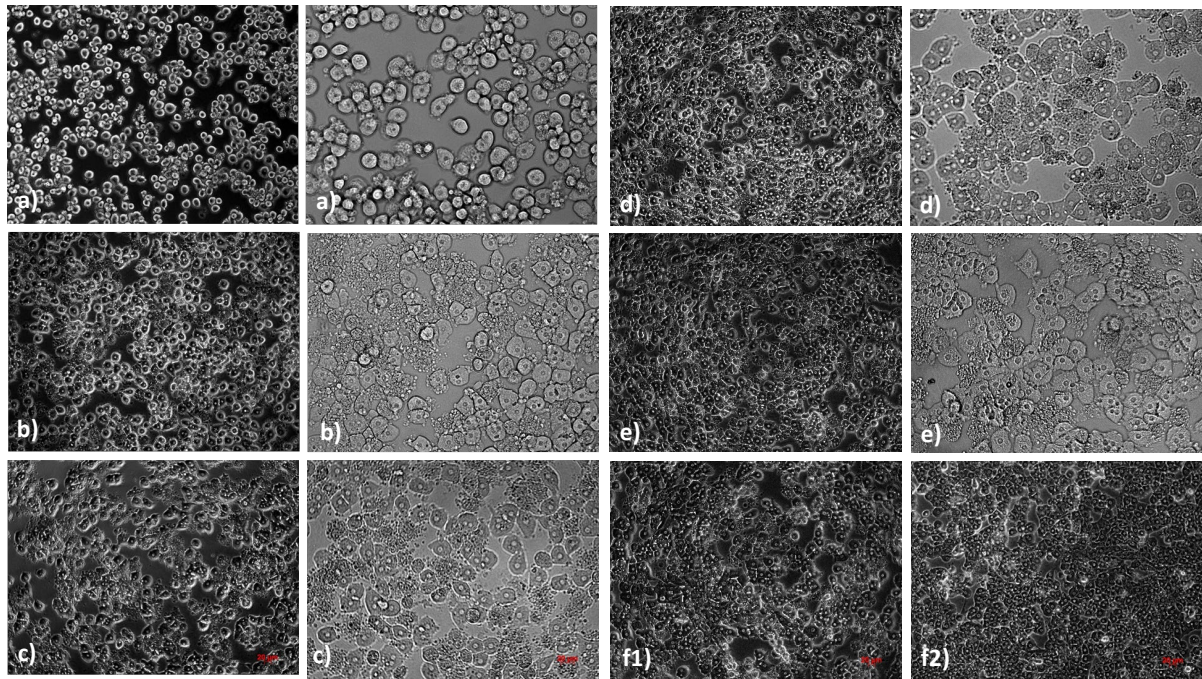


Fig. S1. Inverse phase contrast images of hepatocytes in sandwich culture after 4h (*a*), 1 day (*b*), 2 days (*c*), 3 days (*d*) and 4 days (*e*) and in indirect (*f1*) and direct (*f2*) hepatocyte- Kupffer cell co-culture (*f1*). Magnification in each case 10x (left) and 20x (right), 10x for *f1* and *f2*.

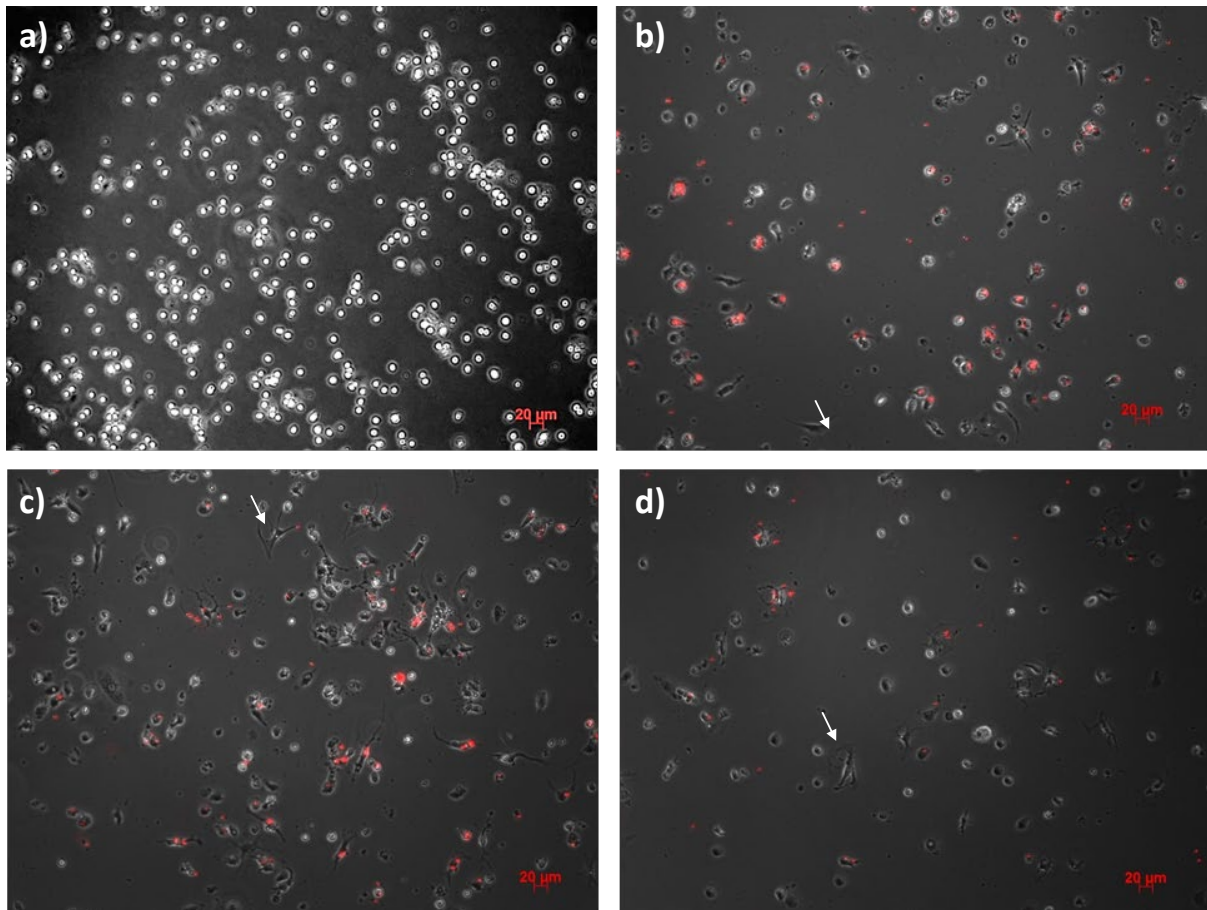


Fig. S2. Inverse phase contrast images of Kupffer cells after 6h (*a*), 1 day (*b*), 2 days (*c*) and 3 days (*d*) in culture with phagocytosed latex beads (red fluorescence); stellate protrusions visible from day 1 (white arrow).