

Supporting Information

Wearable Temperature Sensor Based on Graphene Nanowalls

Jun Yang, Dapeng Wei*, Linlong Tang, Xuefen Song, Wei Luo, Jin Chu, Tianpeng Gao, Haofei Shi* and Chunlei Du

Key Laboratory of Multi-scale Manufacturing Technology, Chongqing Institute of Green and Intelligent Technology, Chinese Academy of Sciences, Chongqing 400714, PR China

* Corresponding author: Prof. Dapeng Wei, E-mail address: dpwei@cigit.ac.cn, Tel: +86-23-65935628;

Prof. Haofei Shi, E-mail address: shi@cigit.ac.cn, Tel: +86-23-65935620

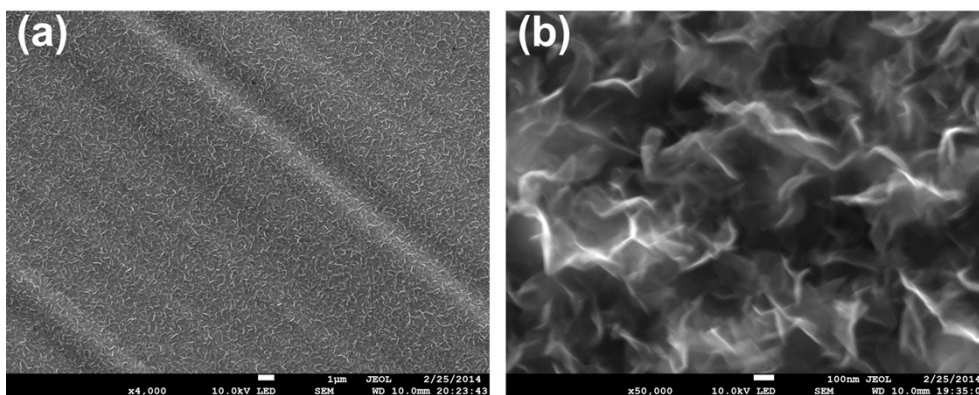


Fig. S1 Low and high magnification SEM images of GNWs on copper foil.

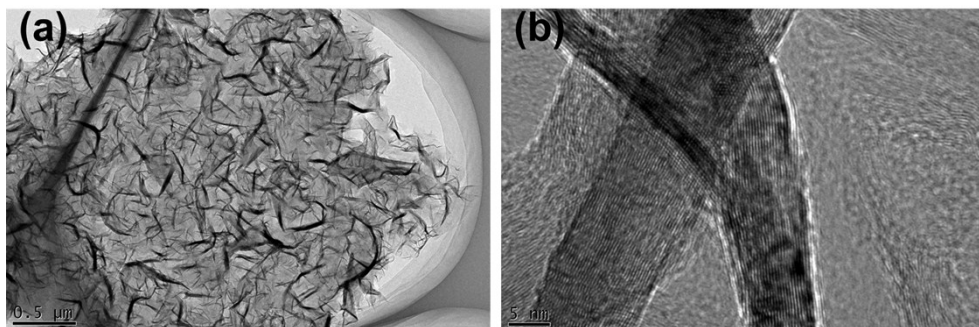


Fig. S2 Low and high magnification SEM images of GNWs.

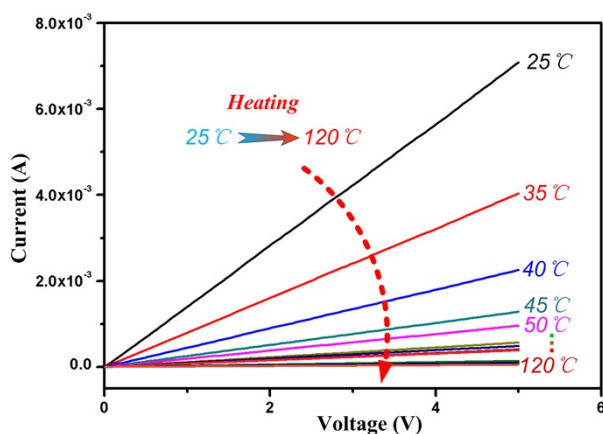


Fig. S3 I-V characterization of sensor at different temperatures from 25°C to 120°C.

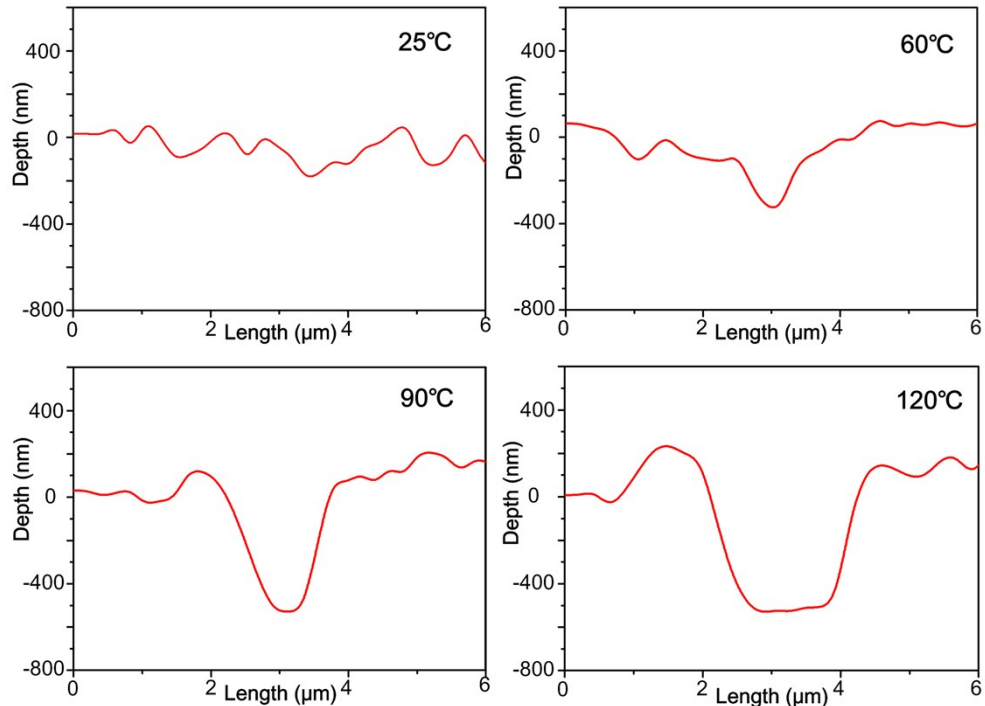


Fig. S4 AFM cross-section of crack region (red line in Fig. 4b, 6μm) under different temperature, 25°C, 60°C, 90°C and 120°C, respectively.

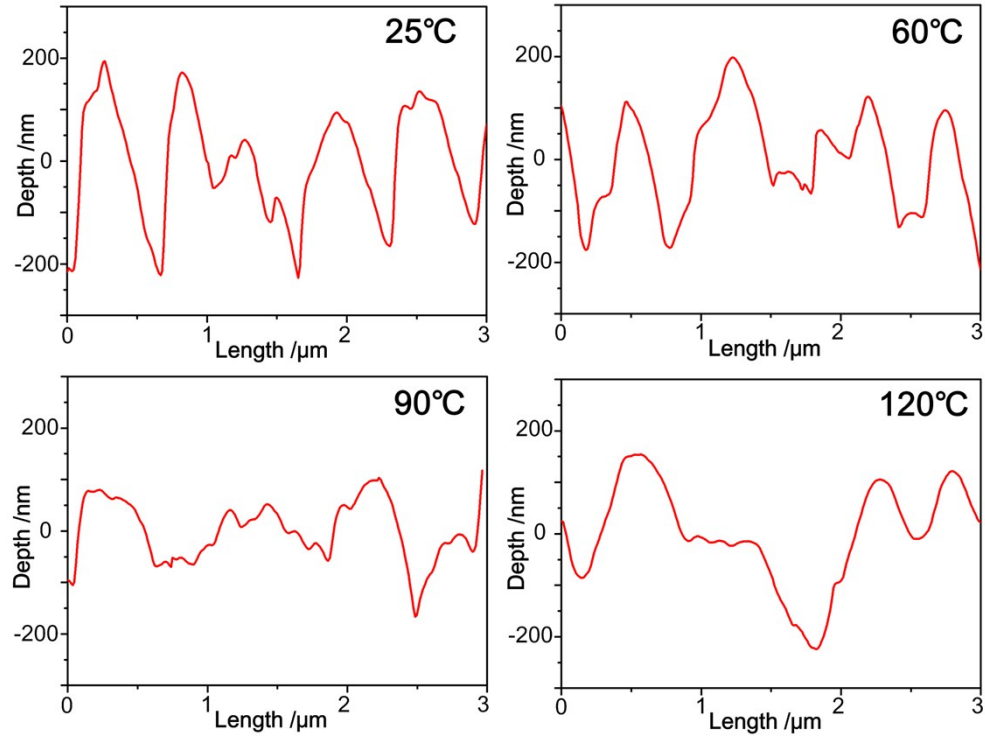


Fig. S5 AFM cross-section of GNWs film in Fig. 4c (3μm) under different temperature, 25°C, 60°C, 90°C and 120°C, respectively.

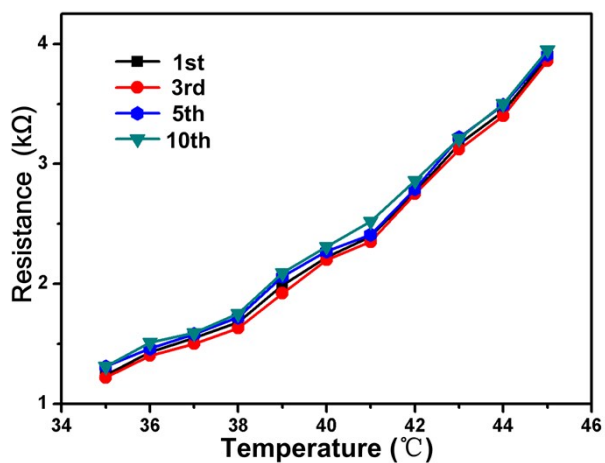


Fig. S6 Resistance change versus temperature during 10 testing cycles.

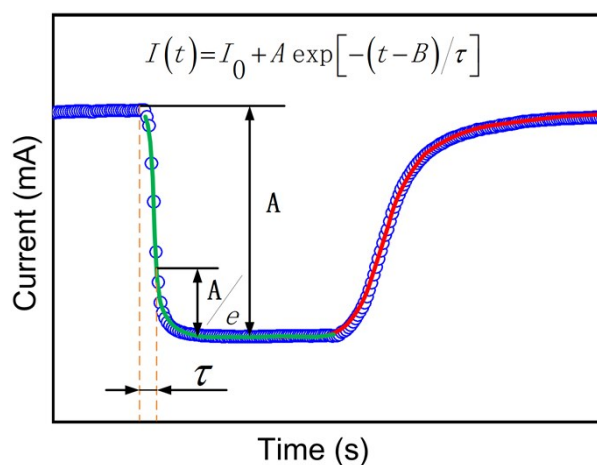


Fig. S7 Definition of response time.

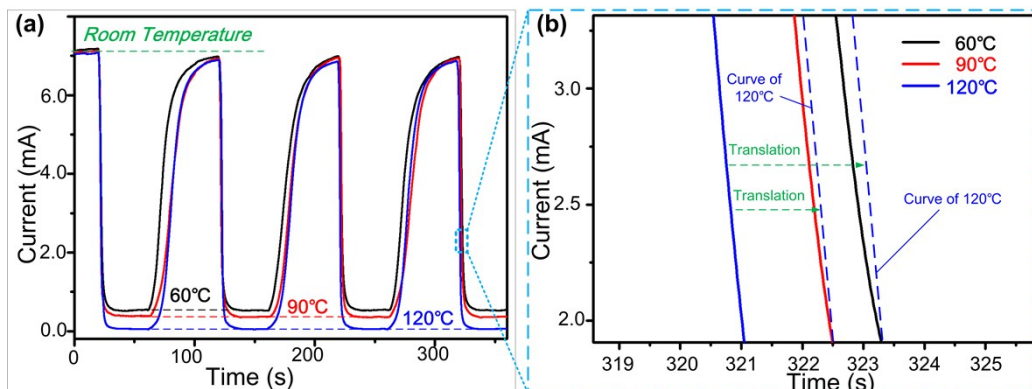


Fig. S8 Response speed of different temperatures.

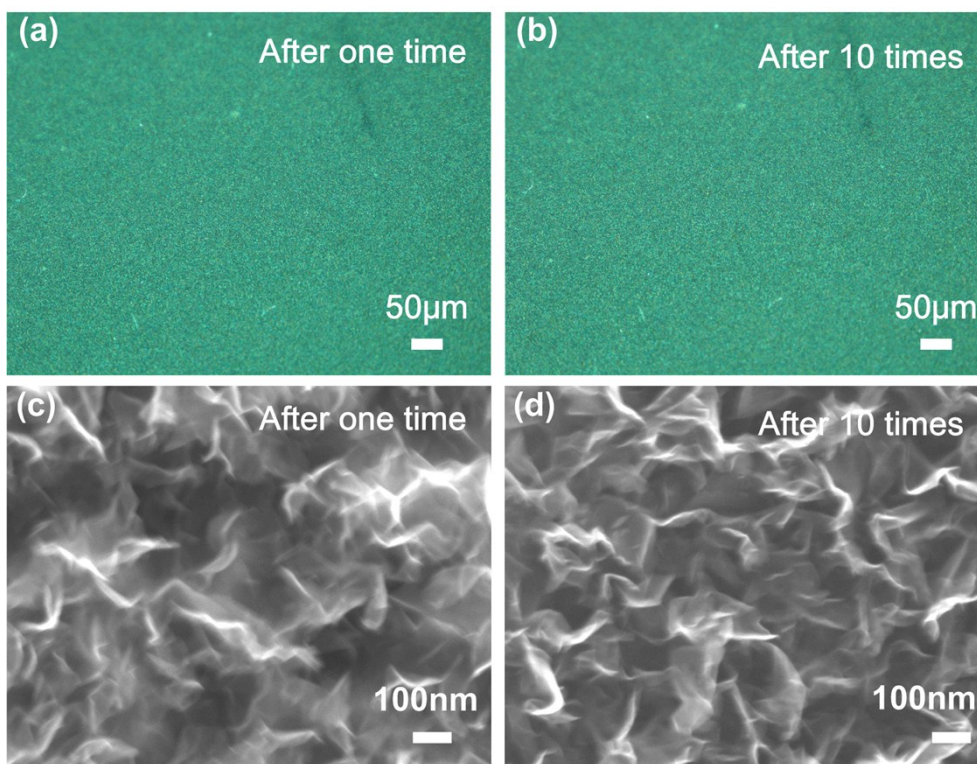


Fig. S9 Morphology variation of GNWs film after 10 testing cycles.