

Electronic Supplementary Information (ESI)

Combined spectroscopy methods and molecular simulations on the
binding properties of trametinib to human serum albumin

Zili Suo, Qiaomei Sun, Hongqin Yang, Peixiao Tang*, Ruixue Gan, Xinnuo Xiong,
and Hui Li*

College of Chemical Engineering Sichuan University, Chengdu 610065, PR China

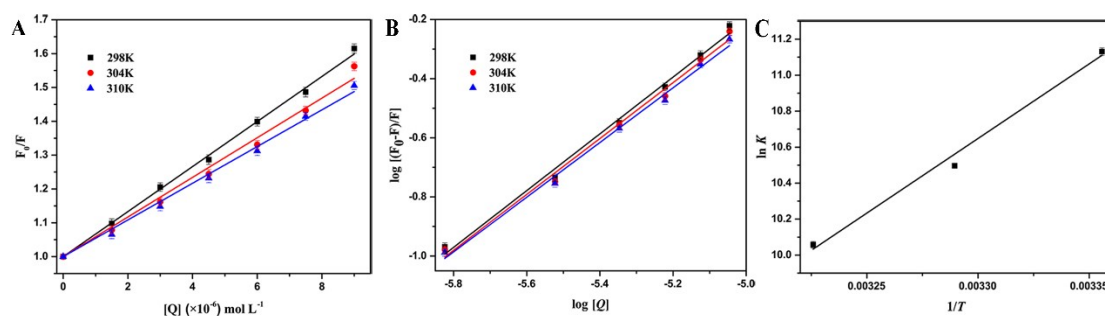


Fig. S1 Stern-Volmer plots (A), the Double-log plots (B) and the van't Hoff plot (C) for the trametinib-HSA interaction.

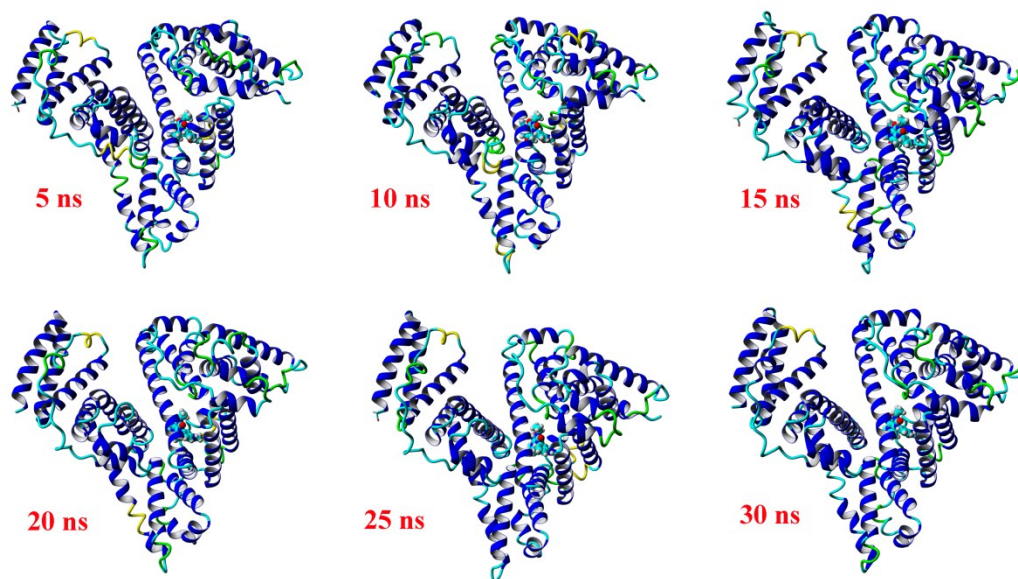


Fig. S2 Several sampled snapshots of trametinib–HSA complex in the MD simulation.

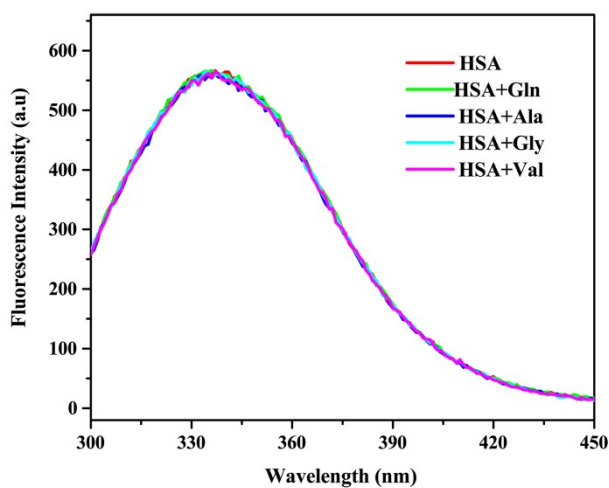


Fig. S3 Fluorescence emission spectra of HSA (2.0 μM) with Gln, Ala, Gly, and Val (400.0 μM).

Table S1 Content of α -helical of HSA under different concentrations of trametinib.

System	$C_{\text{Trametinib}}$ (μM)	α -helical (%)
Trametinib–HSA	0.0	53.25
	4.0	52.43
	8.0	52.89