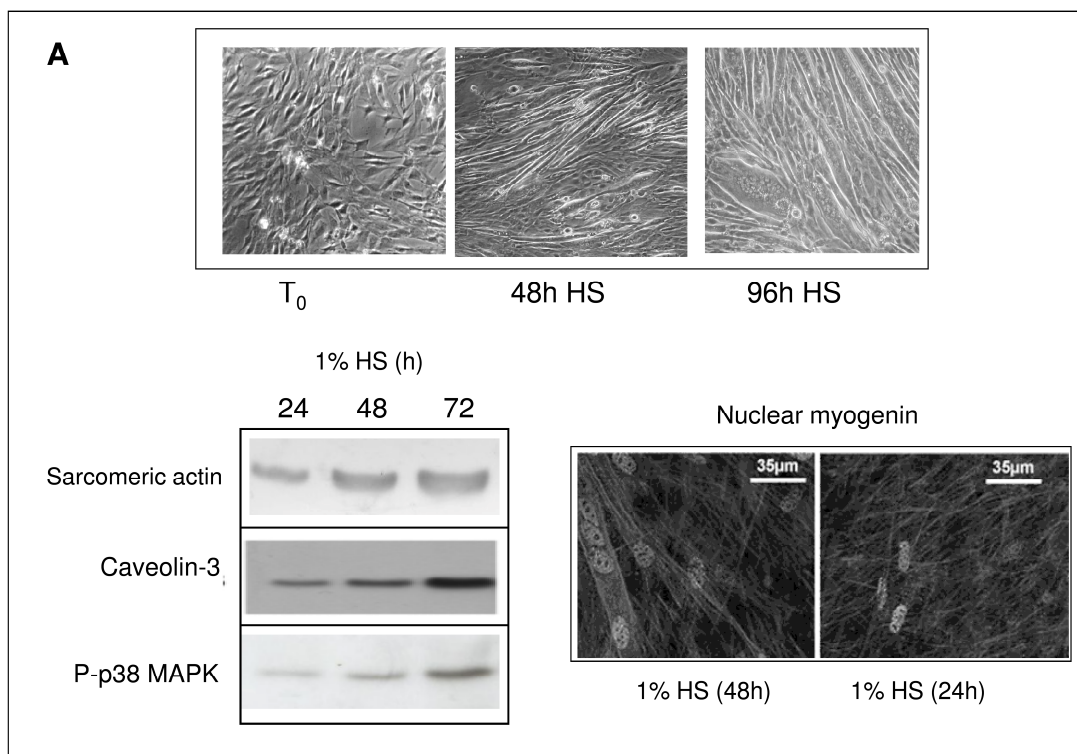
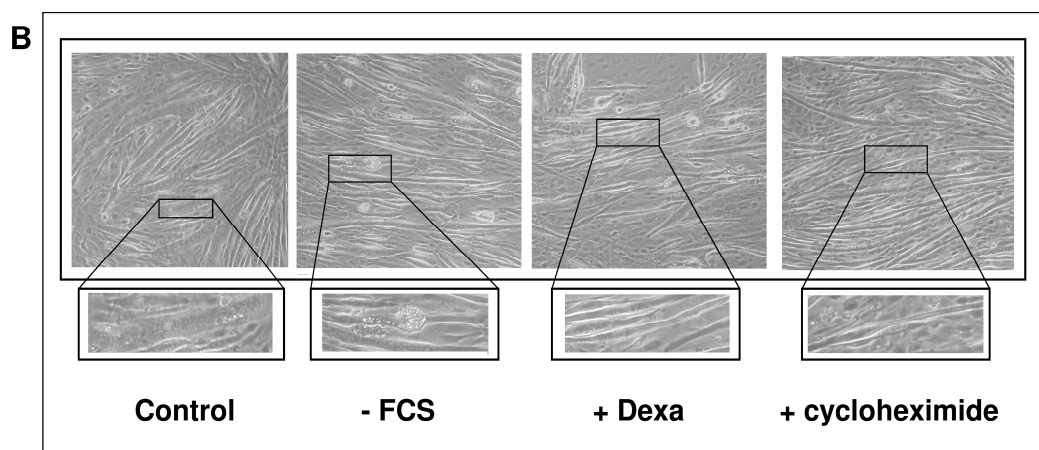


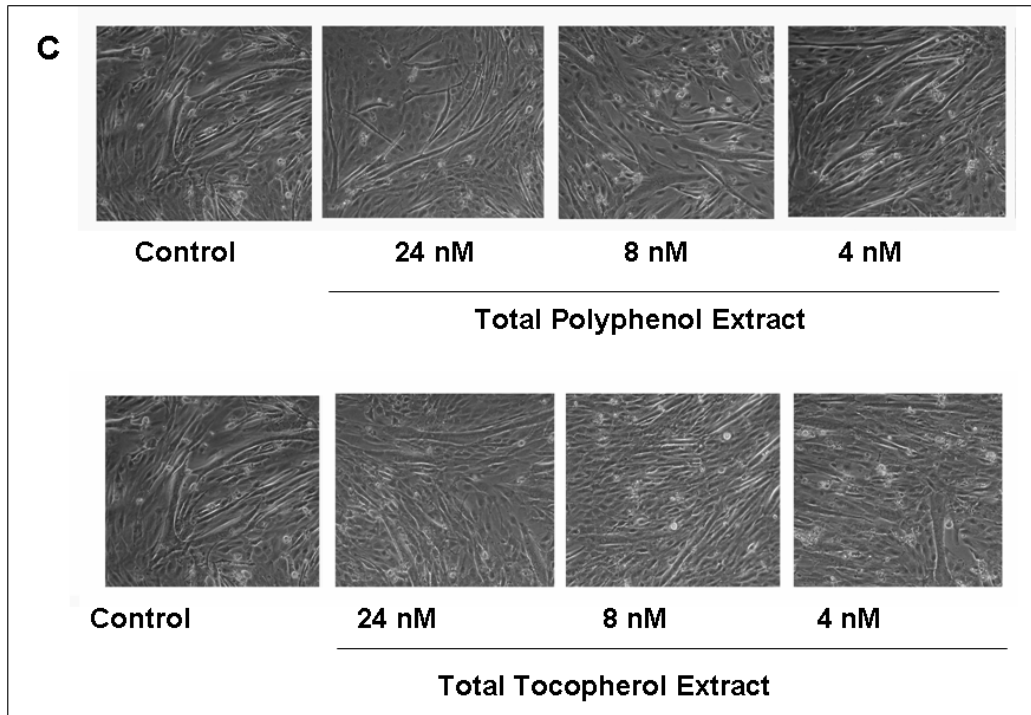
Supplemental data



Supplemental Figure 2A



Supplemental Figure 2B



Supplemental Figure 2C

Fig. 2. Starvation- and Dexamethasone-induced skeletal muscle cell atrophy.

A) Morphological modifications and myogenic marker expression in C2C12 myoblasts. Confluent C2C12 cells were incubated in DMEM containing 1% Horse Serum (HS) for the indicated time (hours) as reported in Methods. The content of sarcomeric actin, caveolin-3 (cav-3) and phospho-p38 MAPK (P-p38 MAPK) was analyzed by Western Blotting analysis. A blot representative of at least three independent experiments is shown. Nuclear localization of the myogenic factor myogenin is shown in a representative immunofluorescence image.

B) Morphology of control differentiated C2C12 cells and starved- (-FCS), Dexamethasone- and cycloheximide-induced atrophic cells.

C) Effect of different concentrations of total polyphenols or tocopherols extracted from chestnut flours on atrophic myotube morphology. Note the changes in cell size and the number of nuclei/cell.

