

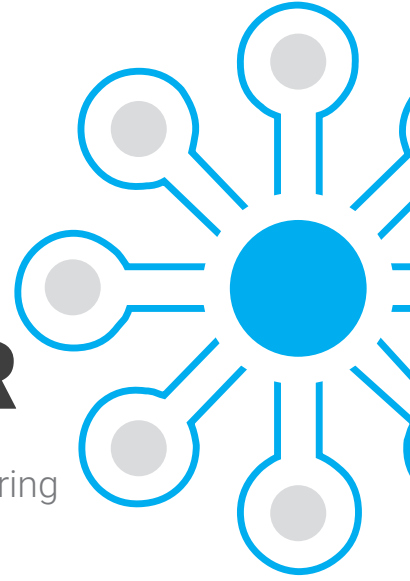


STORMSHIELD

NETWORK SECURITY

STORMSHIELD MANAGEMENT CENTER

Spend your time focusing on the most important tasks, while ensuring the best security for your network



Streamlining

OF TEDIOUS
DAILY TASKS

Vision

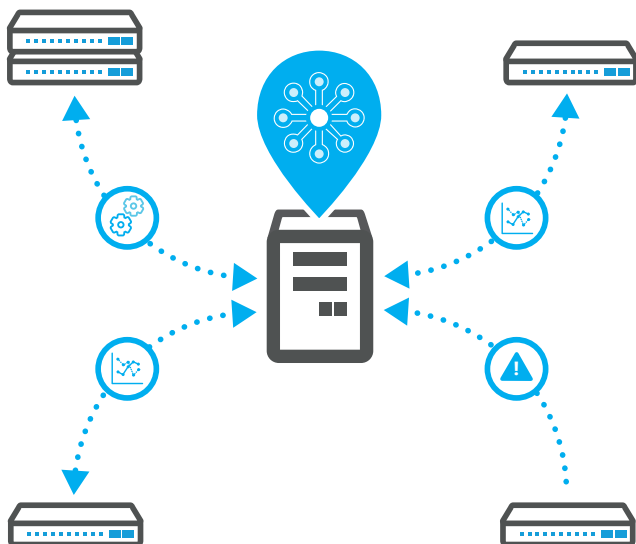
CENTRAL POINT
FOR OVERALL
MANAGEMENT

Security

STREAMLINED
INFRASTRUCTURE
MANAGEMENT

Control

SECURITY
POLICY



Simplify your life

Stormshield Management Center is the centralized management solution that facilitates the configuration of all of your firewalls from a single point.

Improve the management and security of your infrastructure while controlling the impacts of various changes.

Save time on administration tasks

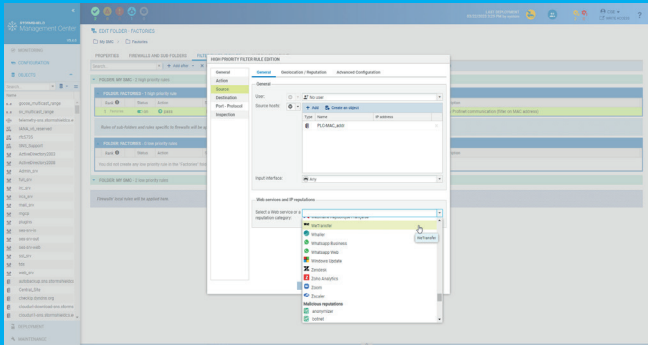
- Centralized management of VPN topologies
- Quick & flexible administration of common rules across multiple firewalls
- Configuration is automatically deployed as soon as the equipment reconnects
- Automatic & centralized SMC and SNS backups

Secure management

- Pull technology: no risk of unauthorized access
- Automatic rollback if connection is lost
- Configuration redundancy to set up a disaster recovery plan

Status	Name	Ver...	Deployment	Last activity	CPU (%)	Memory (%)	Disk	IP address	Serial number
My SMC ► Datacenters (1 firewalls displayed out of 1)									
✓	Alpha	4.0.3	00034	Connected for 7 hours				192.168.233.201	VMSNSX09E0074A9
My SMC ► Offices (1 firewalls displayed out of 1)									
✓	Bravo	4.0.3	00034	Connected for 6 hours				192.168.233.202	VMSNSX09E0075A9 VMSNSX09E0076A9
My SMC ► Shops (1 firewalls displayed out of 1)									
✗	Charlie	4.0.3	00037	Disconnected for 4 days				192.168.233.204	VMSNSX09E0073A9

Monitoring table



Configuration of webservice in filtering rules

Router/Gateway	Router ID*	Folder	IP version	IP address	Main/back-up	SD-WAN
My SMC						
Lyon						
Router_Lyon						✓ Enab
Docker_gw	32768		4	192.168.56.1	Principal	
Paris	32769		4	192.168.56.15	Principal	
Marseille						
Marseille_router						✓ Enab
Docker_Marseille	32768		4	192.168.56.1	Principal	

SD-WAN deployment

FEATURES

Secure communications

TLS communications with certificate authentication
Pull technology: no exposed services at remote sites

Administrator management

Simultaneous configuration editing
Logging of administrator actions (logs, alerts...)
Authentication on outside AD, OpenLDAP or Radius server
Admin access rights management

Firewall association

Association via assistant or USB key
Association of a production firewall without downtime

Asset monitoring

Firewall status and health indicators
VPN tunnel status
SD-WAN link quality monitoring
Monitoring of subscribed options and alert when maintenance expires
Direct link to Stormshield Log Supervisor (SLS)

Asset maintenance

SSO access to firewall configurations and logs
Automatic backup of firewall and server configurations
Active Update server for SNS, connected to the Internet or not

SNS CLI scripts

Scripts with variables instantiated according to values set for each firewall
Scripts execution scheduled or postponed

Centralized configuration management

Network (Ethernet interfaces, VLAN, Bridges, Aggregates, VTI, QoS)
Routing (static and dynamic)
General objects database
SD-WAN (SLA objects and best link selection)

VPN topology

- Mesh and star
- PSK authentication and certificates
- Policy-Based or Route-Based (VTI)
- DR mode support

NAT and filtering rules

- Rules shared by groups of firewalls
- Specific rules for each firewall
- Sets of rules common to multiple firewalls

Configurations management

CSV import/export of configuration and monitoring data
Consistency checking
Automatic postponed deployment for offline equipments
Identification of local modifications
Automatic restoration of the last SNS configuration in the event of a dropped connection after deployment
Redundant configuration between 2 SMC

REST API

Deployment
Management of objects and filtering rules, NAT
Monitoring of certificates, VPN topologies and tunnels
Script management

AGENT

Stormshield Network Security

Version 3.7 and higher

HyperV

Windows Server 2016, Windows 2019, Windows 2022

VMware ESXi

Version 7.0 and 8.0

KVM - Qemu

Red Hat 8 and 9

Publics Cloud

Amazon Web Services
3DS Outscale