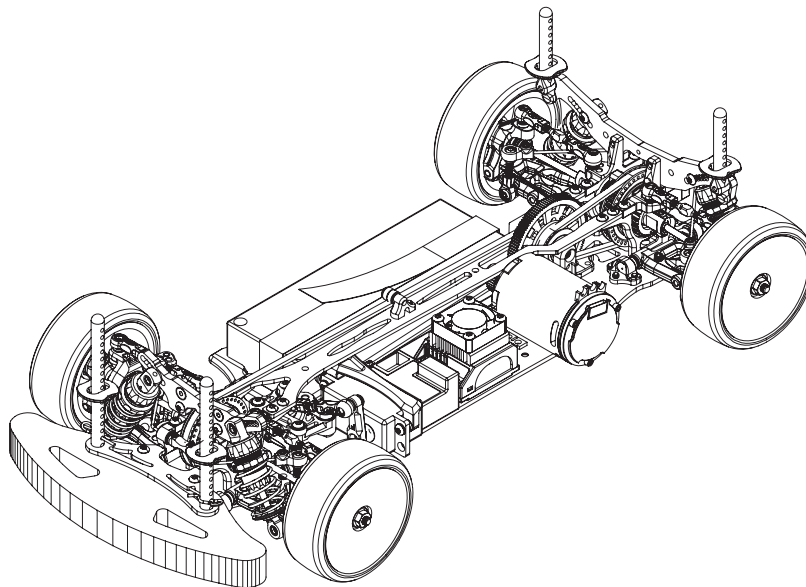


COMPETITION GRADE HIGH PERFORMANCE RADIO CONTROL RACING CAR CHASSIS KIT

WILDFIRE DOB

1/10 4WD ELECTRIC COMPETITION TOURING CAR KIT



INSTRUCTIONS MANUAL

vbc racing

E

Thank you for purchasing VBC Racing product.

Things that we should remind you.

This VBC Racing kit is a high performance, racing grade car kit intended for experienced racers. The kit compose of VBC formulated composite materials, top quality full carbon fiber chassis and high grade 7075 material which will give you a competitive edge over the others.

Novice racer should seek advice from more experienced racer before assembly.

Always keep this instruction manual handy at all times for quick reference even after completing the assembly.

Before your assembly, sand the chassis edges.

Sand the chassis edges with #600 sand paper and apply CA glue to the edges and counter sink holes.

Need help or support.

If you need help or you would like to leave us a comment, please email to our support team: support@vbc-racing.com or visit our web site www.vbcrcing.com



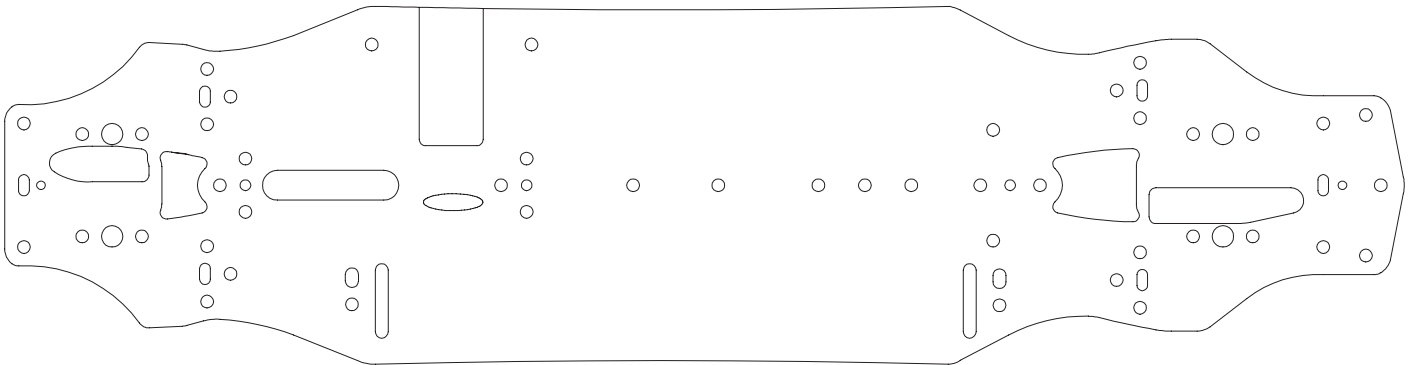
1

Graphite Edges Protection Procedure



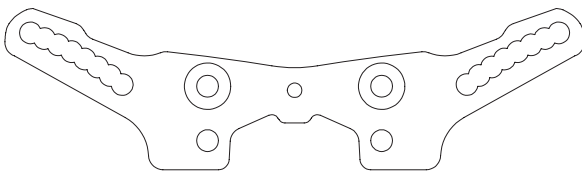
*Not included in this kit

Sand the chassis edges with #600 sand paper(not included) and apply CA glue(not included) to the edges of the chassis.

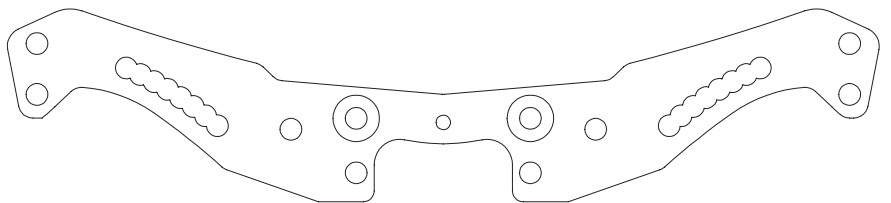


A-01-P30797 WildFireD08 Standard Graphite Chassis

Sand the below graphite edges with #600 sand paper and apply CA glue to the edges.



A-01-P30801 WildFireD08 Graphite Front Shock Tower

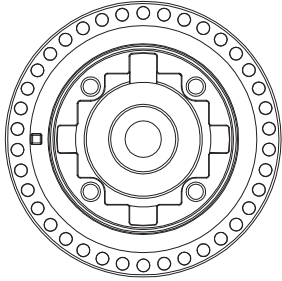


A-01-P30800 WildFireD08 Graphite Rear Shock Tower

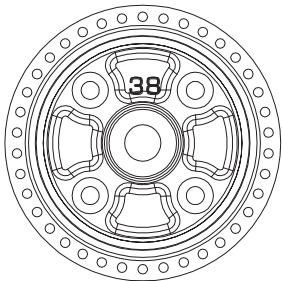
2

Rear Gear Diff Left Side

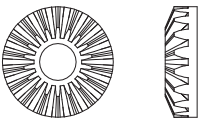
Rear Gear Diff Assembly



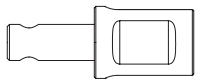
Gear Diff Housing A-03-VBC-0016 x 1



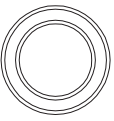
Gear Diff Pulley 38T A-03-VBC-0017 x 1



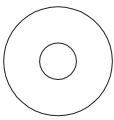
Diff Gear A-03-VBC-0019 x 2



Lightweight Gear Differential Cup B02-P30888 x 2



10 x 15 Ball Bearing C-02-BB-1510-P x 2



15 x 0.3 Shim B-02-VBC-0077 x 2



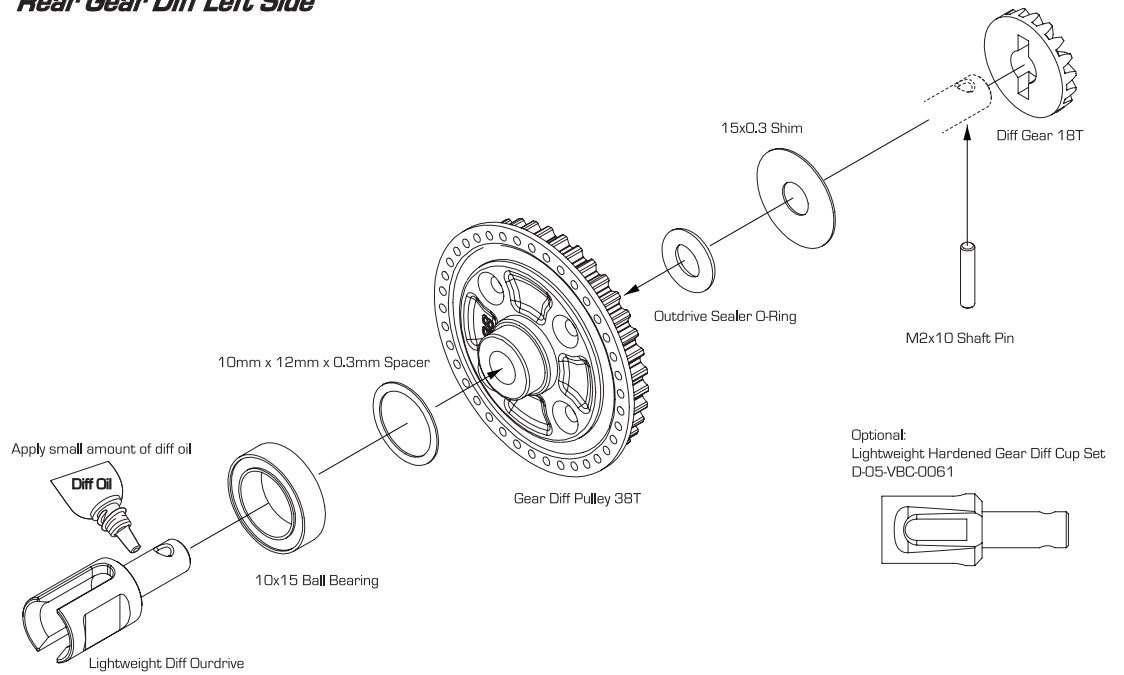
M2 x 10 Shaft Pin B-02-VBC-0020 x 2



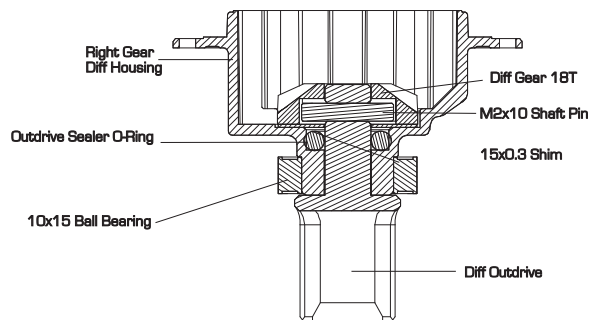
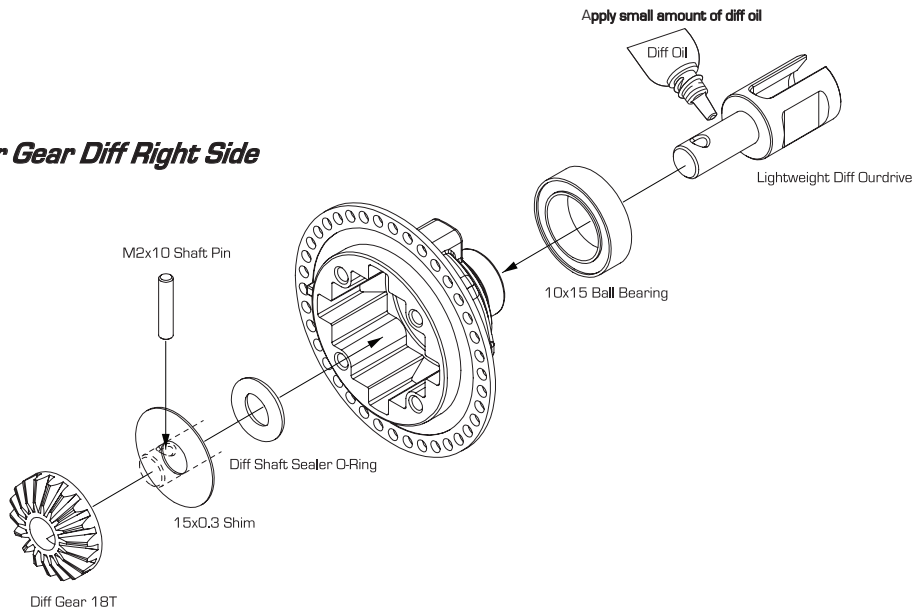
Diff Shaft Sealer O-Ring B-03-VBC-0008 x 2



10mm x 12mm x 0.3mm Spacer C-02-P30914 x 1



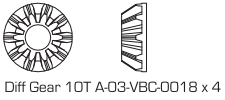
Rear Gear Diff Right Side



Rear Gear Diff Right Side Assembly Cross Section

3

Rear Gear Diff Assembly Continue



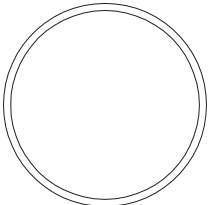
Diff Gear 10T A-03-VBC-0018 x 4



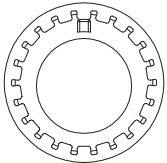
9.5x0.2mm Shim B-02-VBC-0078 x 4



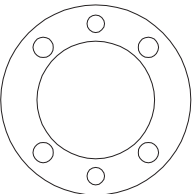
M2.6x10 Flathead Screw C-02-SC-F2.6x10 x 4



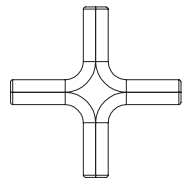
Diff Housing Sealer O-Ring B-03-VBC-0005 x 1



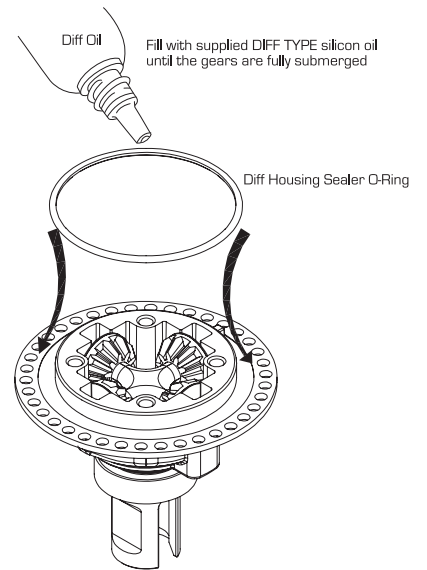
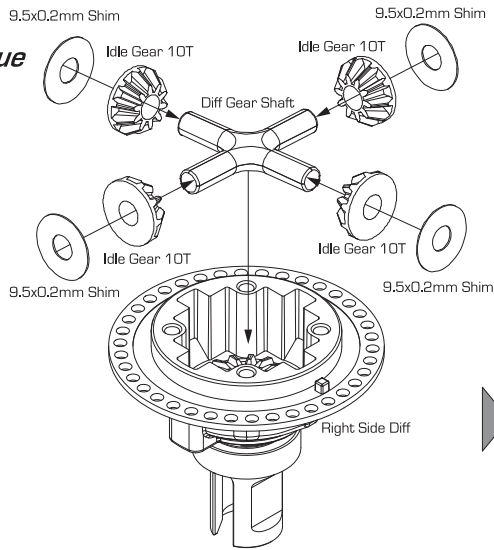
Belt Tension Adjuster Ring A-03-VBC-0047 x 2



Seal Gasket B-03-VBC-0004 x 1

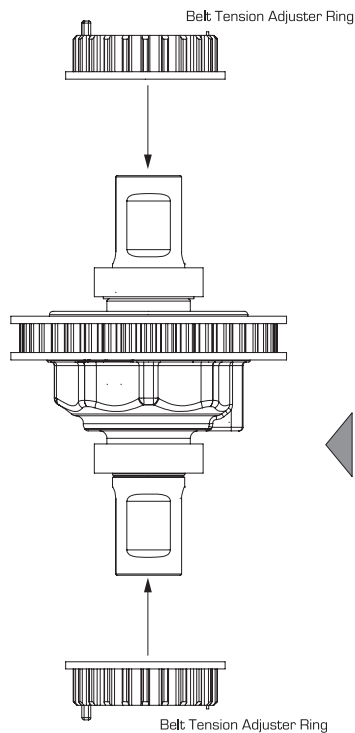


Diff Gear Shaft A-03-VBC-0020 x 1

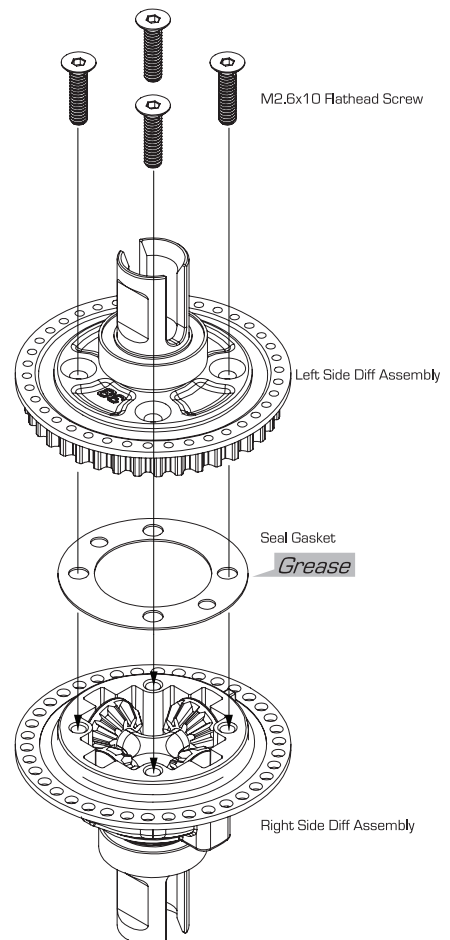


TIP Gear Differentials

Traction	Low	Medium	High
	600 Cst	2000 Cst	5000 Cst
	1000 Cst	4000 Cst	20000 Cst



Place Seal Gasket to the left side diff assembly before putting the right side diff together



BAG MARKED **STEP4-6**



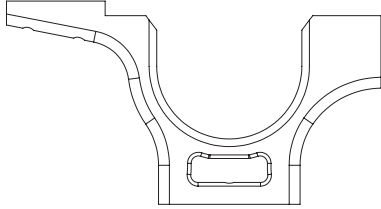
4

Rear Drivetrain Assembly

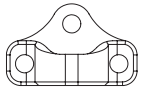
TIP Split Mount Insert chart

WIDTH	+1	+0.75	+0.5	+0.25	0	-0.25	-0.5	-0.75	-1
Wide									
Narrow									

Suitable for High Traction Suitable for Low Traction



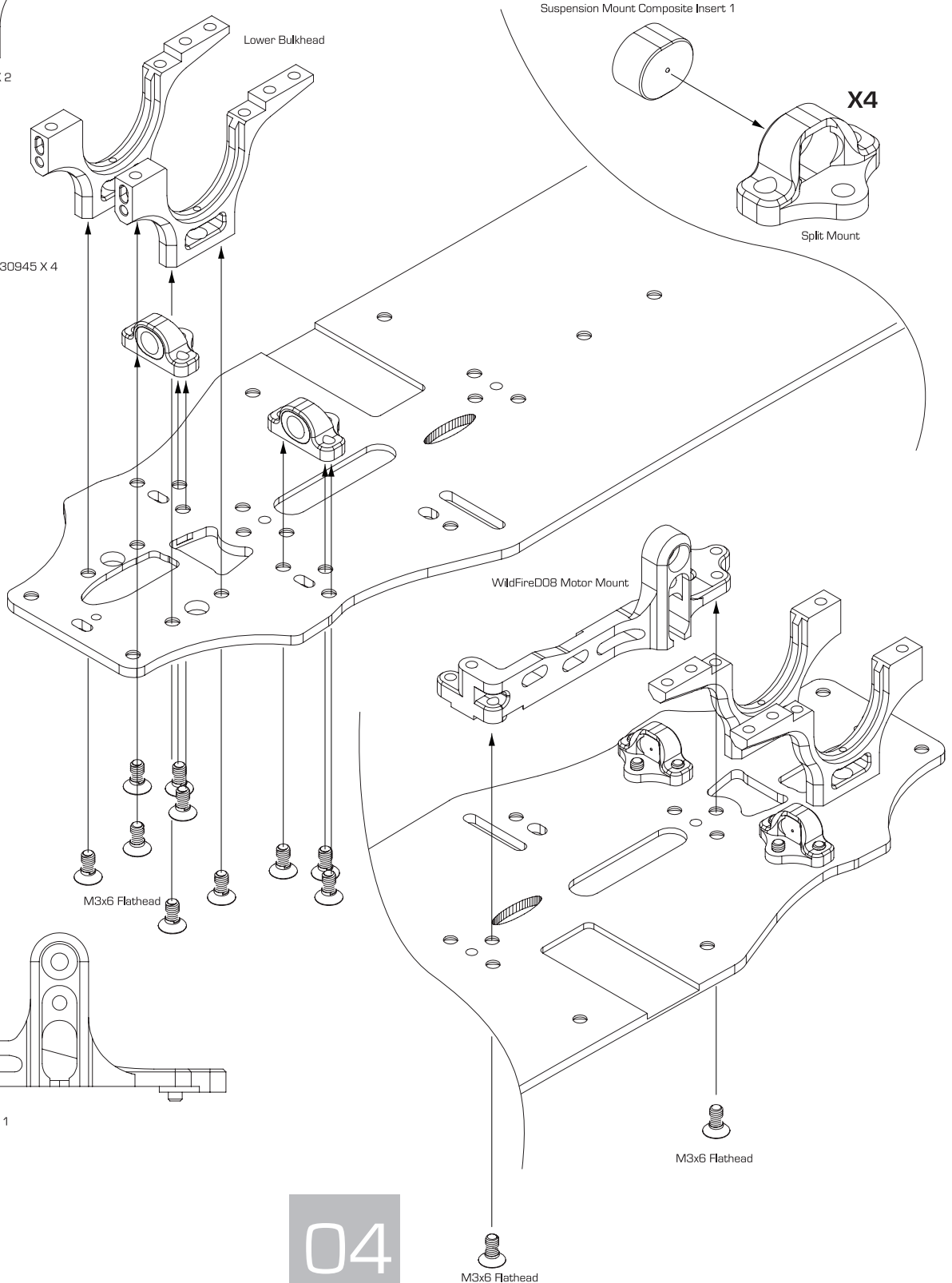
Wildfire D08 Lower Bulkhead B-02-P30802 X 2



Split Mount B-02-P30889 X 4



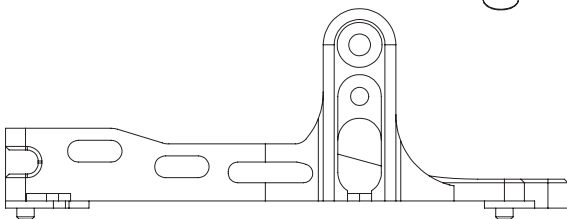
Suspension Mount Composite Insert 1 A-03-P30945 X 4



5



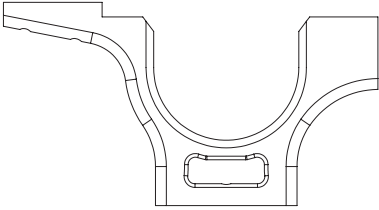
M3x6 Flathead C-02-SC-F0306 X 12



WildFireD08 Motor Mount B-02-P30886 X 1

6

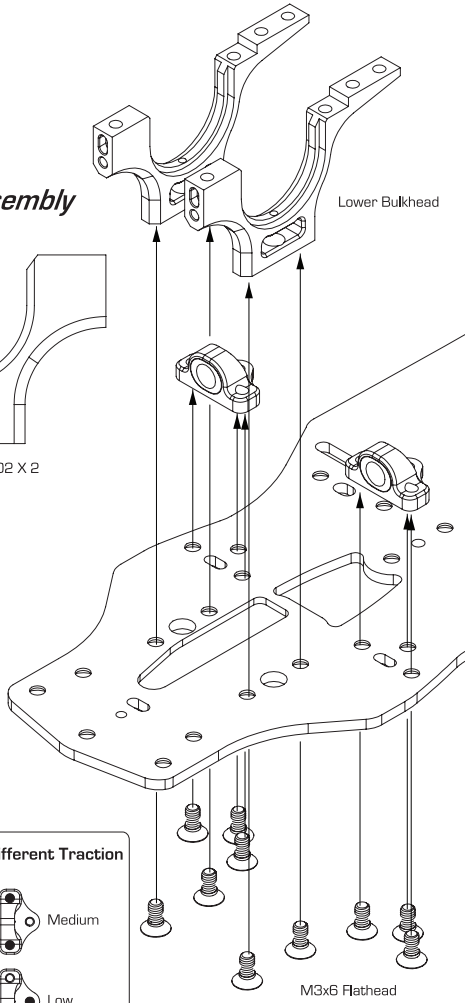
Front Drive Train Assembly



Wildfire D08 Lower Bulkhead B-02-P30802 X 2



M3x6 Flathead C-02-SC-F0306 x 10



TIP Motor Mount Chassis Flex Adjustment (Optional)

1mm Spacer (Optional)

1mm Spacer (Optional)

1mm Spacer (Optional)

1mm Spacer (Optional)

M3 X 6 Flathead (Optional)

M3 X 6 Flathead (Optional)

M3 X 6 Flathead (Optional)

M3 X 6 Flathead (Optional)

A Without Spacer **A** With Spacer

B With Spacer **B** Without Spacer

A+B With Spacer **A+B** No Spacer

Stiff Med-Stiff Med-Soft Soft

TIP Split Mount Setup for Different Traction

High (Default Setup)

Medium

Low

Low

Medium

M3x6 Flathead

TIP Split Mount Setup for Different Traction

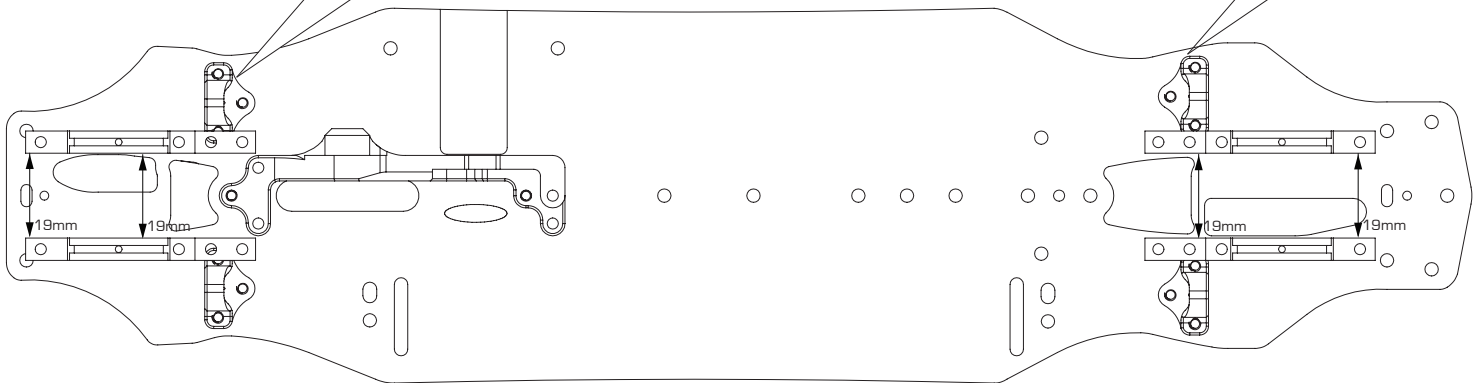
Medium Traction

High Traction (Default Setup)

Low Traction

Low Traction

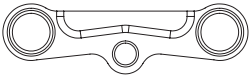
Medium Traction



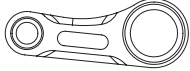
Make Sure The Front and Rear Lower Bulkhead Is Aligned In a Straight Line

7

Floating Steering System Assembly



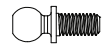
WildFireD07 Steering Bridge B-02-P30153 x 1



WildFireD07 Steering Arm, Left B-02-P30152 x 1



WildFireD07 Steering Arm, Right B-02-P30151 x 1



Ball Connector 4.7x12mm A-02-VBC-5015 x 2



Ball Connector (5mm Length) B-02-VBC-3021 x 1



5x8 Ball Bearing C-02-BB-0805-B x 4



3x6 Ball Bearing C-02-BB-0603 x 2



T2 7075 Spacer B-02-VBC-0019-20 x 2



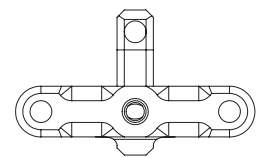
M3x6 Roundhead C-02-SC-R0306 x 2



M3x8 Roundhead C-02-SC-R0308 x 2



WildFireD07 Steering Top-mounted Post B-02-P30154 x 2



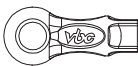
WildFireD07 Floating Steering Mount B-02-P30155 x 1



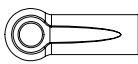
M3x42mm Turnbuckle B-02-VBC-0037 x 2



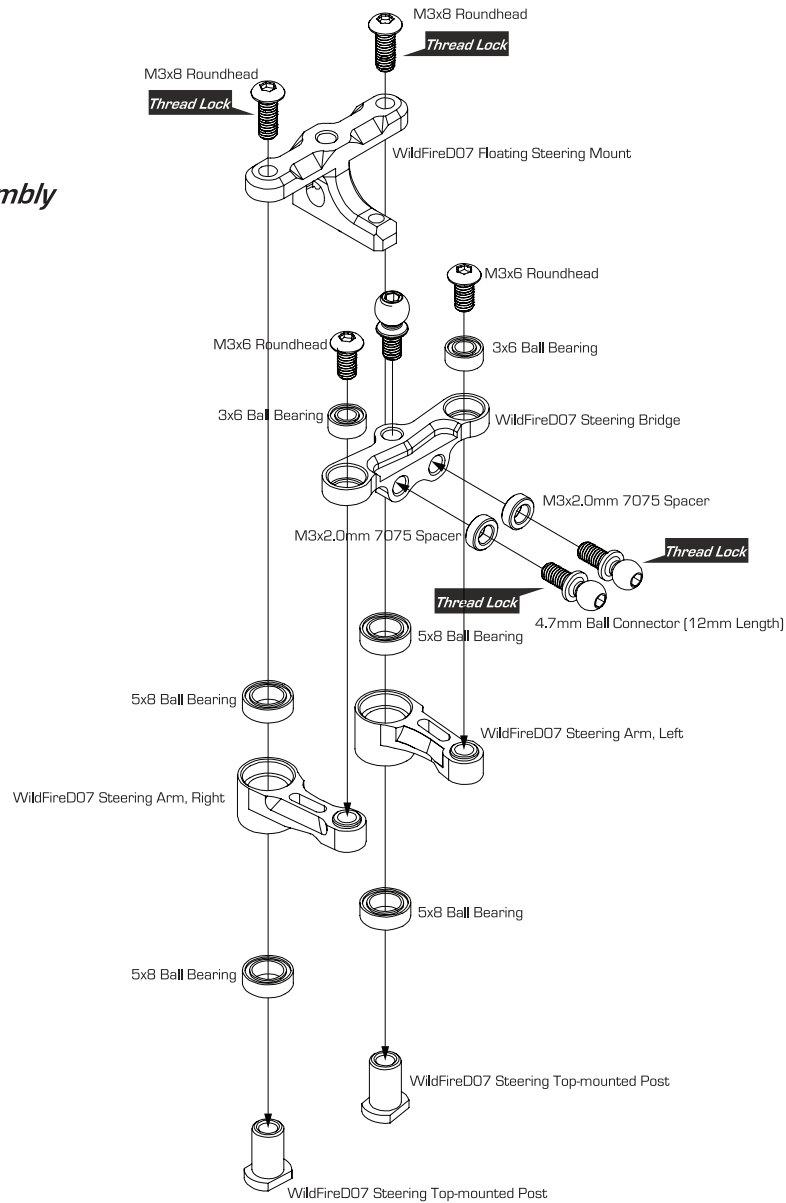
M3x18mm Turnbuckle B-02-VBC-0038 x 1



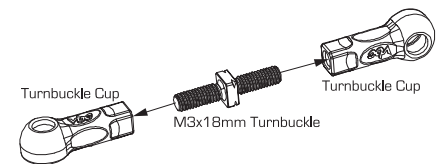
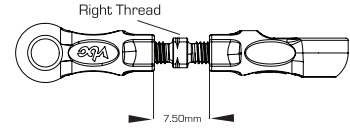
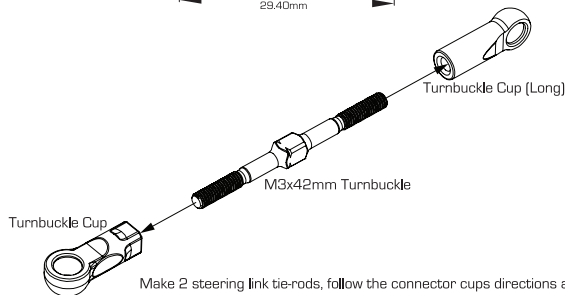
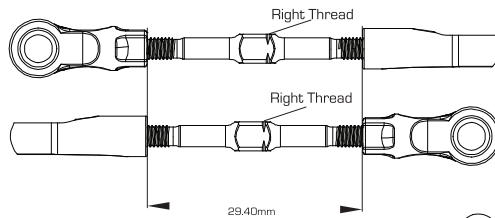
Turnbuckle Cup A-03-VBC-0039 x 4



Turnbuckle Cup (Long) A-03-VBC-5016 x 2



8



Make 1 servo link tie-rod, follow the connector cups directions as the above diagram. The connector cups edge to edge shall be 7.50mm. Please use a caliper to measure the exact measurement

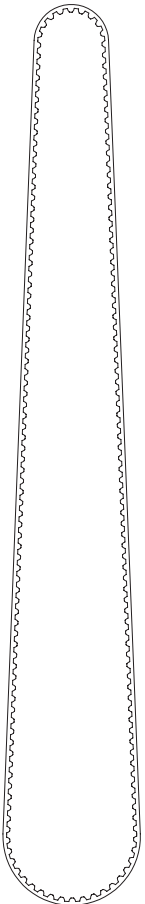
Make 2 steering link tie-rods, follow the connector cups directions as the above diagram. The connector cups edge to edge shall be 29.40mm. Please use a caliper to measure the exact measurement.

9

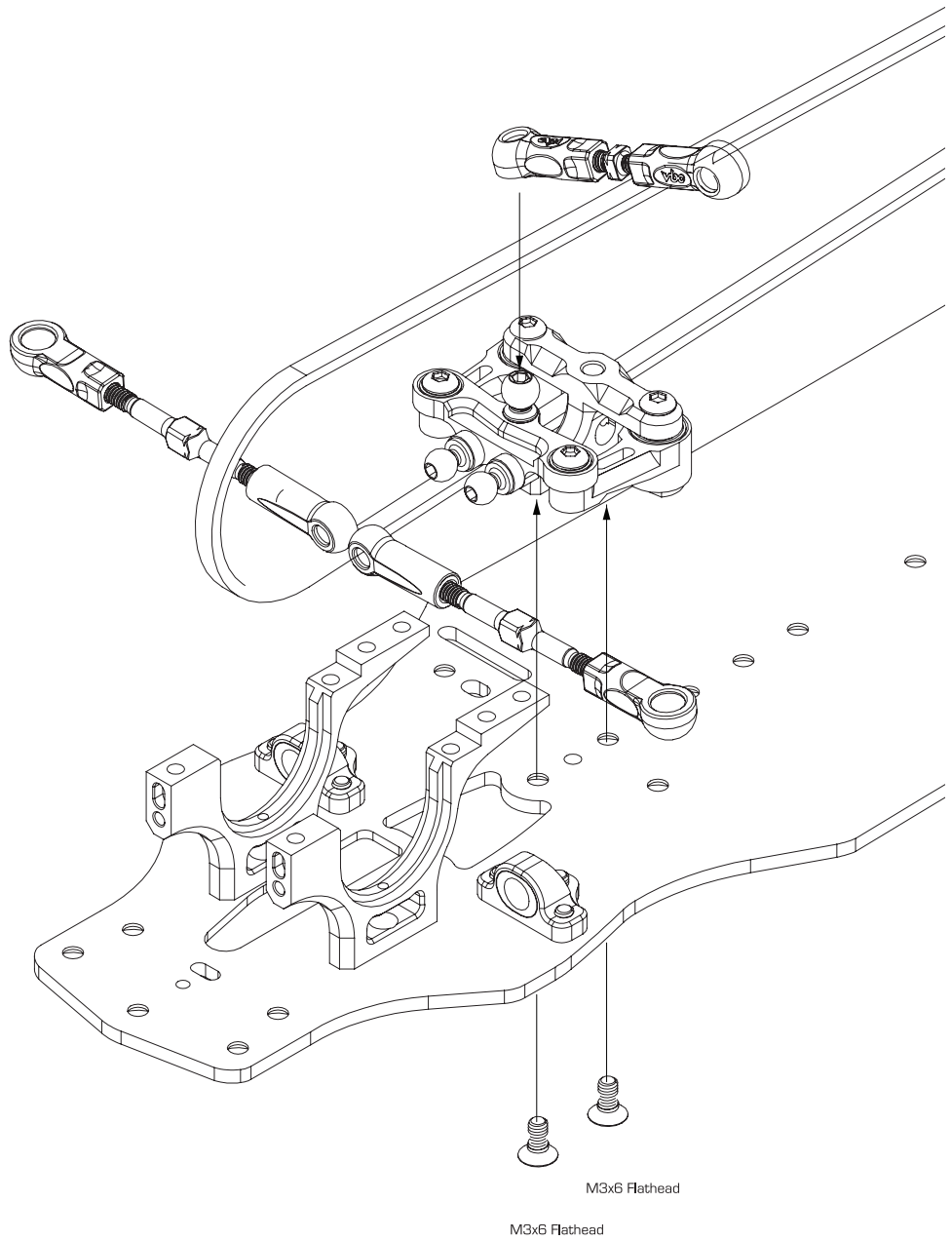
Steering System Assembly



M3x6 Flathead C-02-SC-F0306 x 2



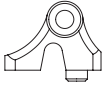
WildFireD06 Front Belt: B-03-VBC-3001 x 1



Install the steering unit onto the main chassis with two M3x6 Flathead Screws. Then attach the left and right tie rods to the steering unit. Make sure the front belt is between the two Steering Assembly Poles.

10

Upper Deck Assembly



WildFireD07 Center Belt Tensioner B-02-P30158 x 1



3x6mm Ball Bearing C-02-BB-0603 x 2



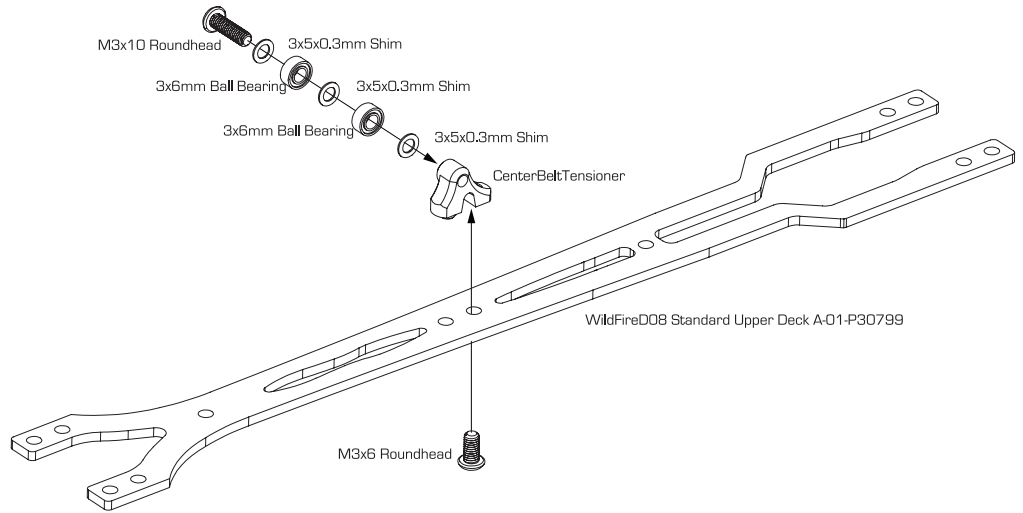
3x5x0.3mm Shim B-02-VBC-0101 x 3



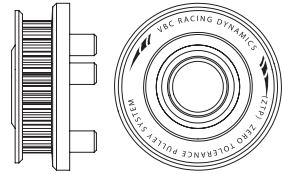
M3x10 Roundhead C-02-SC-R0310 x 1



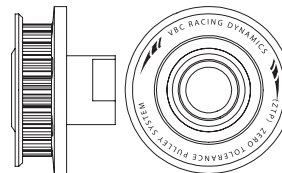
M3x6 Roundhead Screw C-02-SC-R0306 x 1



11



WildFireD07 Alu Center Pulley Adaptor B-02-P30219 x 1



WildFireD07 Alu Spur Gear Adaptor B-02-P30220 x 1



WildFireD07 Alu Center Pulley Spacer B-02-P30144 x 1



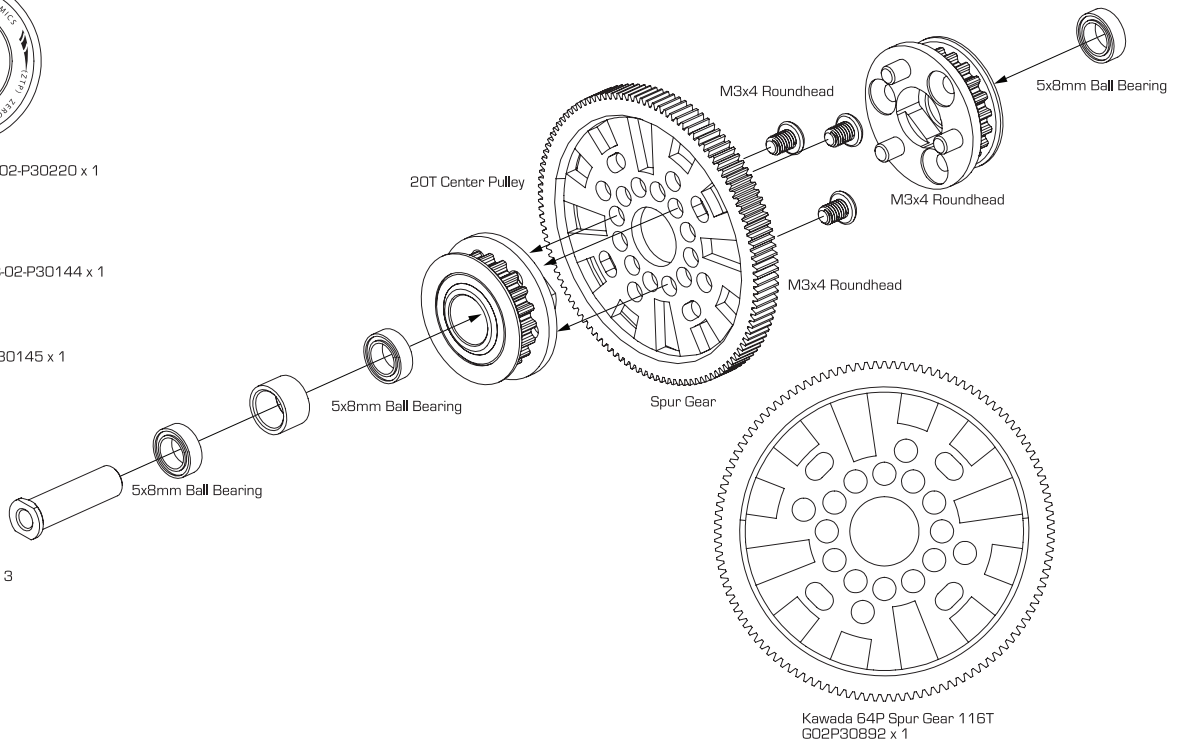
WildFireD07 Center Pulley Shaft C-02-P30145 x 1



M3x4 Round Head Screw C-02-SC-R0304 x 3



5x8mm Ball Bearing C-02-BB-0805-B x 3



Kawada 64P Spur Gear 116T G02P30892 x 1

14

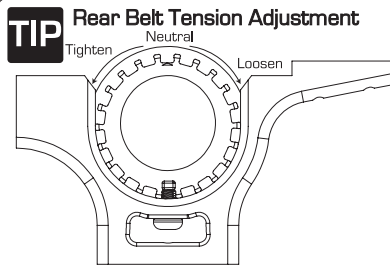
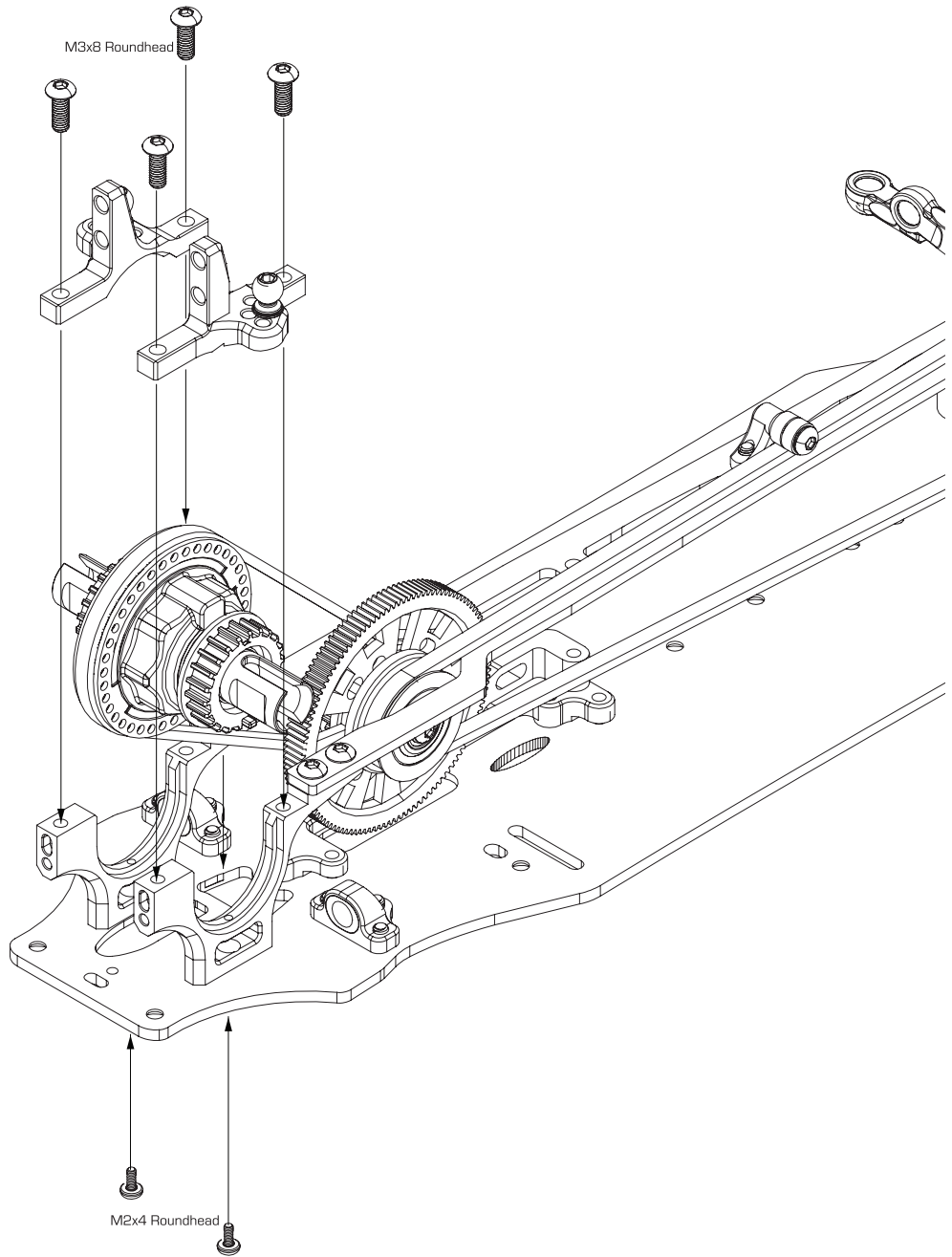
Install Rear Drivetrain



M3x8 Roundhead C-02-SC-R0308 x 4

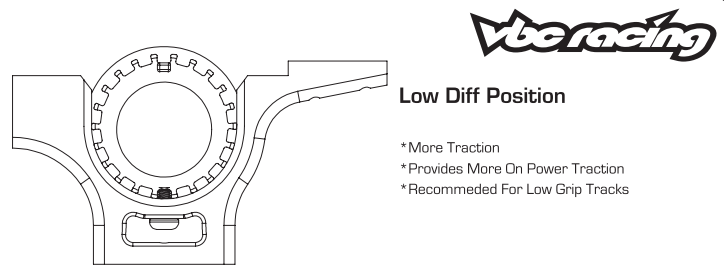


M2x4 Roundhead C-02-SC-R0204 x 2



High Diff Position

- *Less Traction
- *Provides more On Power Steering
- *Recommended For Medium - High Grip Tracks

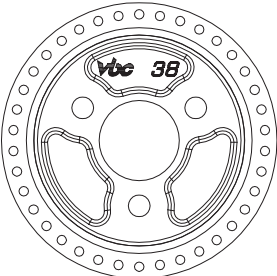


Low Diff Position

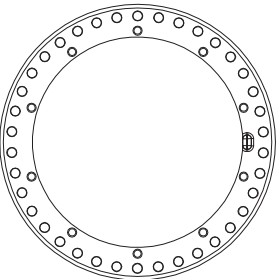
- *More Traction
- *Provides More On Power Traction
- *Recommended For Low Grip Tracks

15

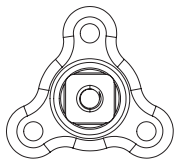
Front Drive Train Assembly - Spool Assembly



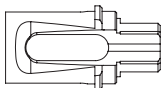
Front Spool 38T A-03-VBC-0021 x 1



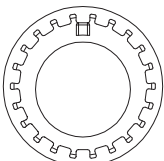
Pulley Belt Guide A-03-VBC-0022 x 1



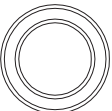
7075 Aluminium Lightweight Spool Shaft B-02-G30391



Lightweight Hardened Spool Outdrive A-03-VBC-0166 x 2



Belt Tension Adjuster Ring A-03-VBC-0047 x 2



10x15 Ball Bearing C-02-BB-1510-P x 2



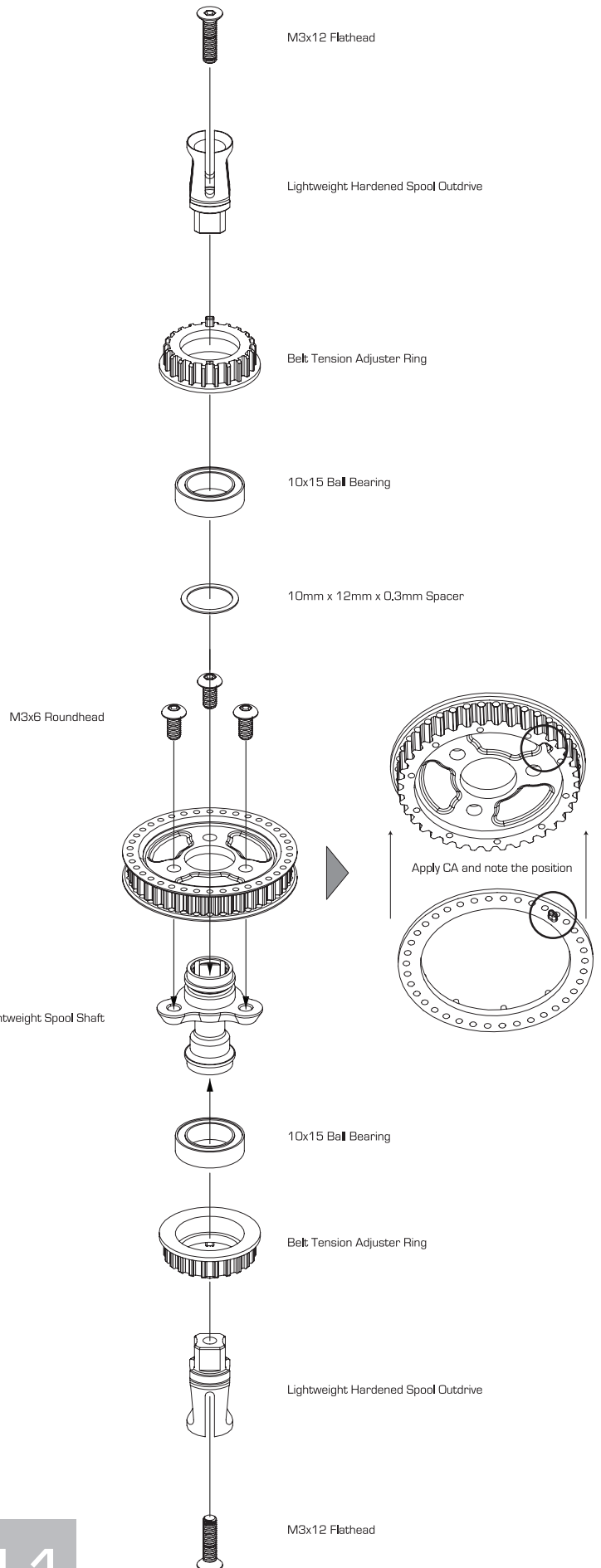
M3x12 Flathead C-02-SC-F0312 x 2



M3x6 Roundhead C-02-SC-R0306 x 3

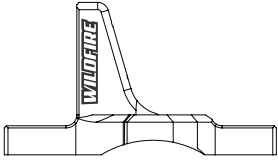


10mm x 12mm x 0.3mm Spacer C-02-P30914 x 1

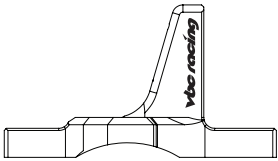


16

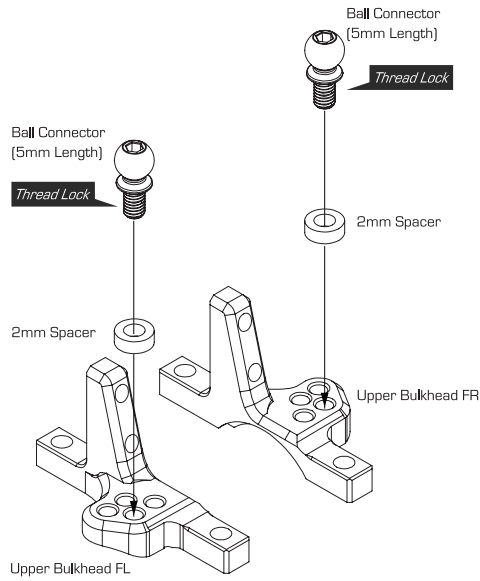
Assemble Front Upper Bulkhead



WildFireD08 Front Upper Bulkhead, Left B-02-P30858



WildFireD08 Front Upper Bulkhead, Right B-02-P30857



17

Install Front Drivetrain



Ball Connector (5mm Length)
B-02-VBC-3021 x 2



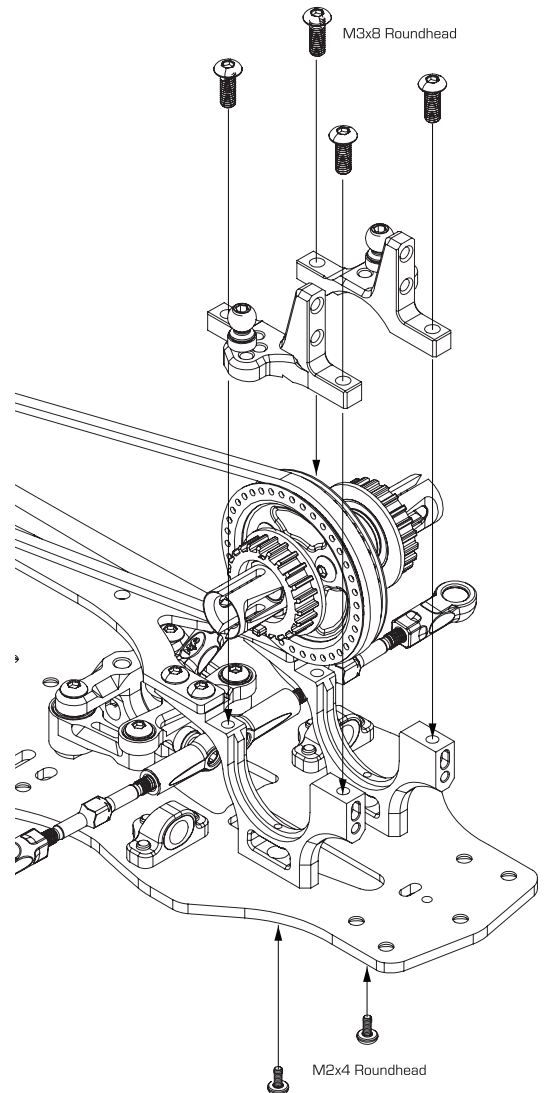
T2 7075 Spacer (Red) B-02-P30890 x 2



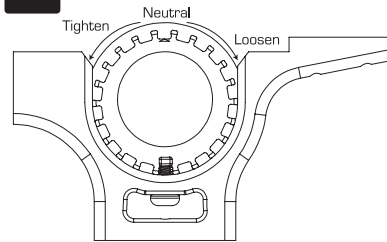
M3x8 Roundhead C-02-SC-R0308 x 4



M2x4 Roundhead C-02-SC-R0204 x 2

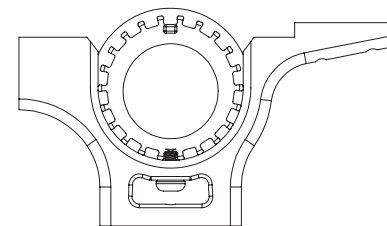


TIP Front Belt Tension Adjustment



High Diff Position

- *Less Traction
- *Provides more Steering
- *Recommended For Medium - High Grip Tracks

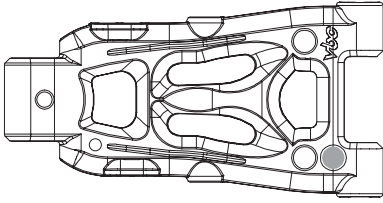


Low Diff Position

- *More Traction
- *Provides More On Power Traction
- *Recommended For Low Grip Tracks

18

Rear Suspension Arm Assembly



R Suspension Arm Composite X Silver A-03-P30896



T2 7075 Spacer (Red) B-02-P30890 x 2



T1 7075 Spacer (Red) B-02-P30891 x 4



Suspension Arm Pin B-02-VBC-0029 x 2



Arm Pin Pivot Ball B-02-VBC-0035 x 2



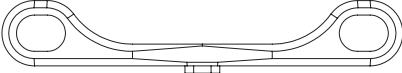
Ball Connector B-02-VBC-3021 x 2



Ball Connector B-02-VBC-0045 x 2



M3x10 Set Screw C-02-SC-SS-0310 x 2



Suspension Mount B-02-P30895 x 1



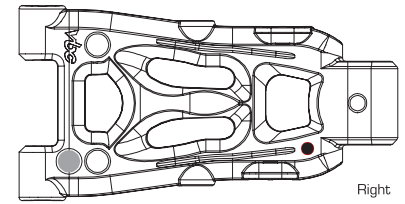
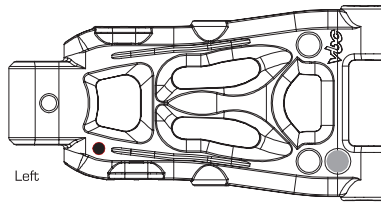
M4x10 Set Screw C-02-SC-SS-0410 x 2



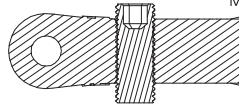
M3x6 Flat Head Screw C-02-SC-F0306 x 2



Suspension Mount Composite Insert 5 A-03-P30949 x 2

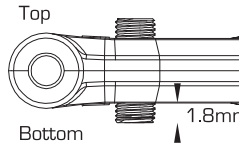


Rear Suspension Arm top view



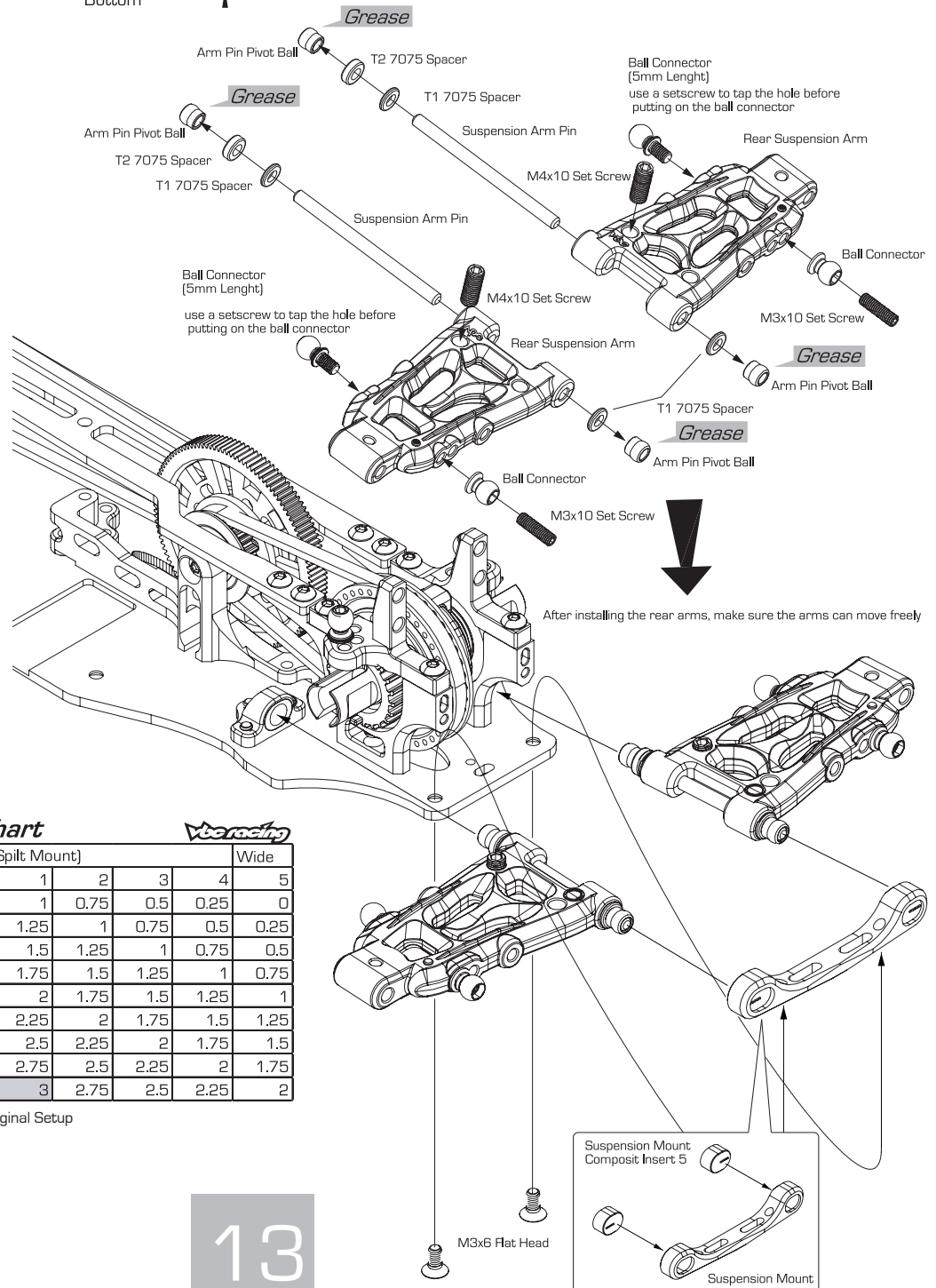
Make sure the black markings are in the same direction on the left and right suspension arms

Insert M4x10 Set Screw from the top of the suspension arm for adjusting down stop. Initial setting is 1.8mm measuring from the bottom part of the arm for both sides.



TIP Suspension Arm Composite Compound Chart

R Suspension Arm Composite X Silver A-03-P30896	R Suspension Arm Composite X Gold A03P30890
Hard	Ultra-Hard



TIP Suspension Mount Insert Chart

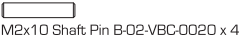
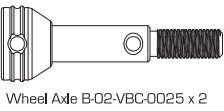
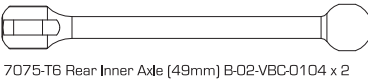
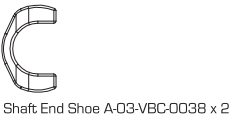
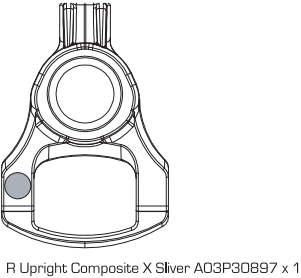


Composite Insert	Narrow		RF (Split Mount)							Wide	
	5	4	3	2	1	2	3	4	5		
Narrow RR (Suspension Mount)	5	2	1.75	1.5	1.25	1	0.75	0.5	0.25	0	
	4	2.25	2	1.75	1.5	1.25	1	0.75	0.5	0.25	
	3	2.5	2.25	2	1.75	1.5	1.25	1	0.75	0.5	
Wide RR (Suspension Mount)	2	2.75	2.5	2.25	2	1.75	1.5	1.25	1	0.75	
	1	3	2.75	2.5	2.25	2	1.75	1.5	1.25	1	
	2	3.25	3	2.75	2.5	2.25	2	1.75	1.5	1.25	
	3	3.5	3.25	3	2.75	2.5	2.25	2	1.75	1.5	
	4	3.75	3.5	3.25	3	2.75	2.5	2.25	2	1.75	
5	4	3.75	3.5	3.25	3	2.75	2.5	2.25	2		

Original Setup

19

Rear Suspension Arm Assembly Part 2



Align the Shaft End Shoe to the Inner Axle Pin hole first and slide the 12mm Shaft Pin to the pin hole before securing the pin with M3x2 Set Screw

Note The Lock Slot Direction

M2x12 Shaft Pin

Shaft End Shoe

Optional: Shaft End Shoe (Self Lubricating) A-03-VBC-0077

Thread Lock

M3x2 Set Screw

7075-T6 Rear Inner Axle (49mm)

Grease

Axle Joint

Grease

Axle Lock Spring

Wheel Axle

M2x10 Shaft Pin

Optional: Hardened Steel Rear Inner Axle (49mm), Short D-05-VBC-0087

49mm Two-Piece Joiny Drive Axle Set, Short D-05-VBC-0092

After assembling the drive shaft, make sure the joints are free swinging.

MAKETWO

M3x3 Set Screw

Lightweight O Offset Hex Wheel Hub

M2x10 Shaft Pin

TIP Suspension Arm Composite Compound Chart

<p>R Upright Composite X Silver A03P30897</p> <p style="text-align: center;">Hard</p>	<p>R Upright Composite X Gold A03P30931</p> <p style="text-align: center;">Ultra-Hard</p>
---	---

20

Rear Suspension Arm Assembly Part 3



Turnbuckle Cup A-03-VBC-0039 x 4



M3x32mm Turnbuckle B-02-VBC-0036 x 2



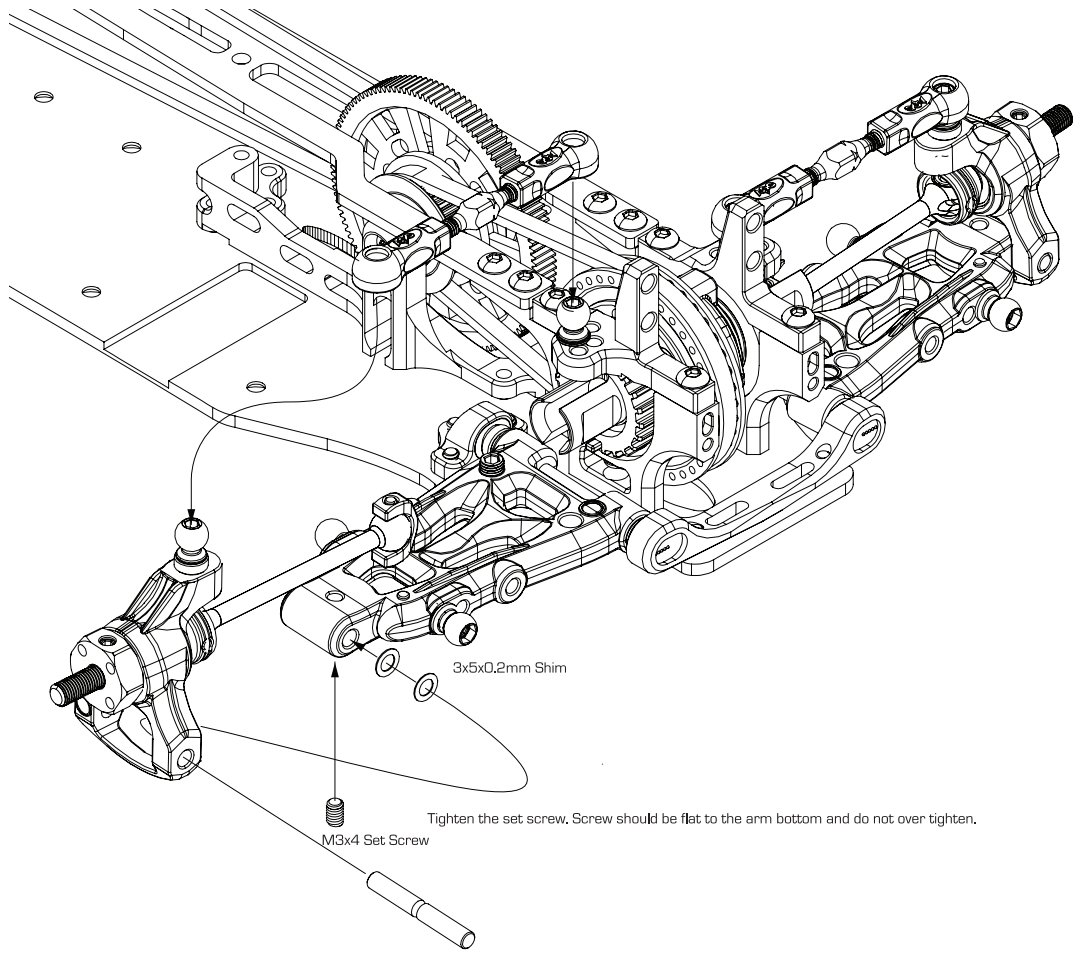
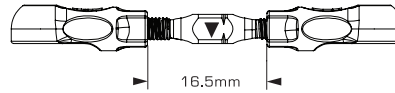
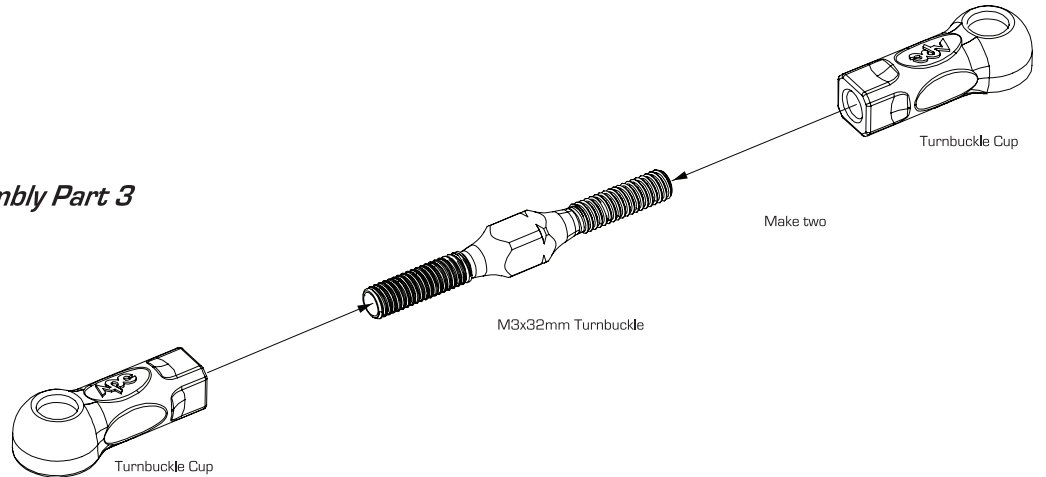
M3x23 Upright Pin B-02-VBC-0032 x 2



3x5x0.2mm Shim B-02-VBC-0100 x 4



M3x4 Set Screw C-02-SC-SS-0304 x 2



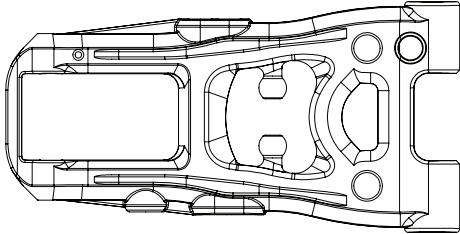
Tighten the set screw. Screw should be flat to the arm bottom and do not over tighten.

M3x4 Set Screw

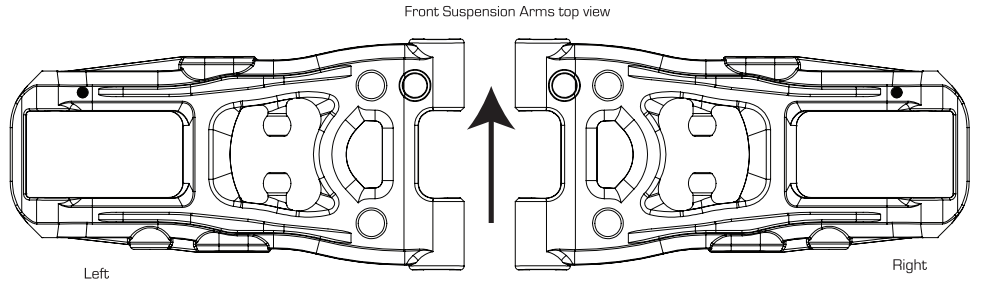
M3x23 Upright Pin

21

Front Suspension Assembly Part 1



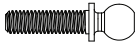
F Suspension Arm Composite X Silver A-03-P30899



Make sure the black markings are in the same direction on the left and right suspension arms

TIP Suspension Arm Composite Compound Chart

F Suspension Arm Composite X Silver A-03-P30899	F Suspension Arm Composite X Gold A-03-P30929
Hard	Ultra Hard



4.7x17mm Ballstud A-02-VBC-5092 x 2



Turnbuckle Cup Open Type S A-03-VBC-0040 x 2



Suspension Arm Spacer T2 A-03-VBC-0052 x 2



Suspension Arm Spacer T1 A-03-VBC-0051 x 4



Suspension Arm Pin B-02-VBC-0029 x 2



Ball Connector B-02-VBC-0045 x 4



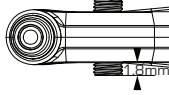
Arm Pin Pivot Ball B-02-VBC-0035 x 4



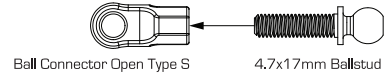
M4x10 Set Screw C-02-SC-SS-0410 x 2



M3x10 Set Screw C-02-SC-SS-0310 x 2

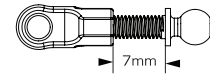


Insert M4x10 Set Screw from the top of the suspension arm for adjusting down stop. Initial setting is 1.8mm measuring from the bottom part of the arm for both sides.



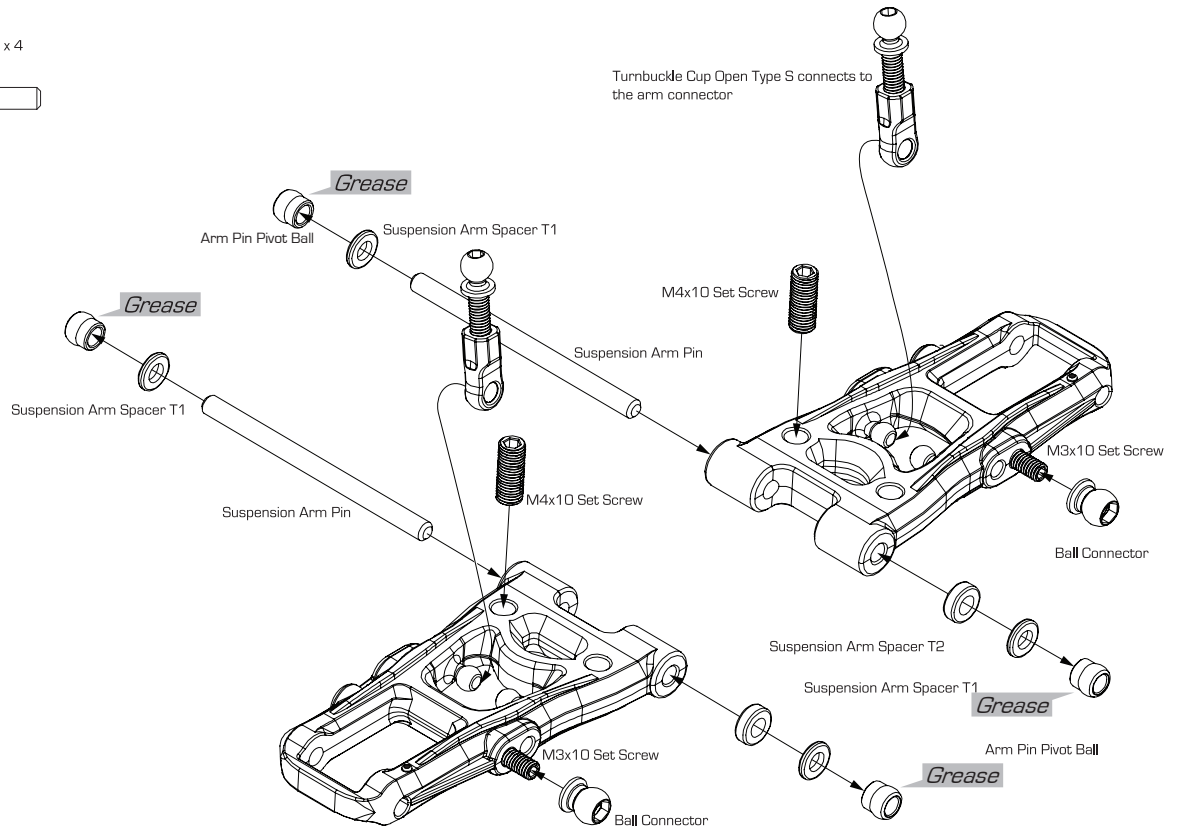
Ball Connector Open Type S

4.7x17mm Ballstud



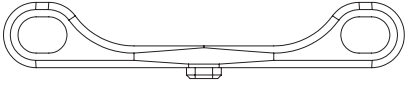
7mm

Make 2 sets



22

Front Suspension Assembly Part 2



Suspension Mount B-02-P30895 x 1



M3x6 Flat Head Screw C-02-SC-F0306 x 2

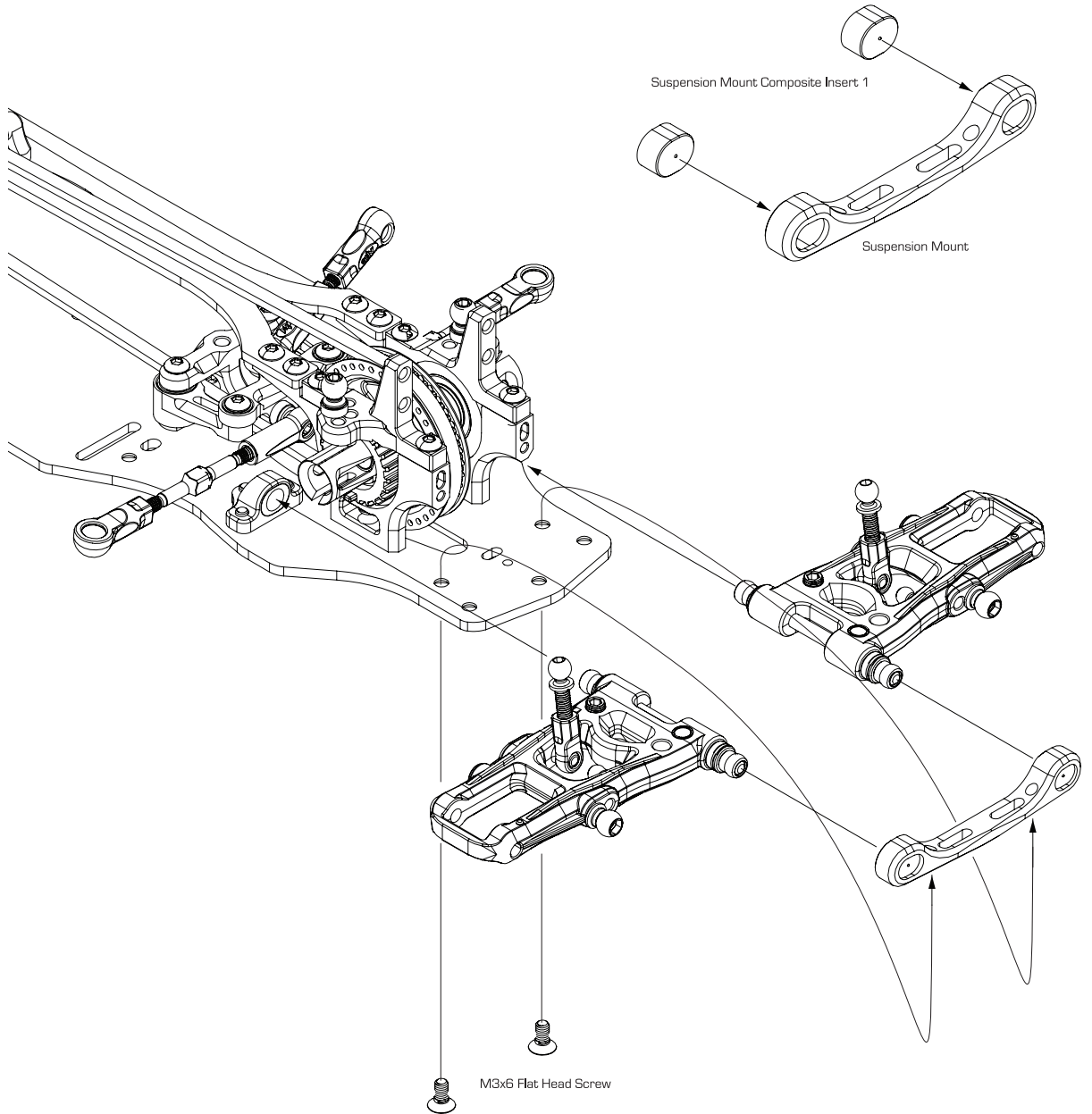


Suspension Mount Composite Insert 1 A03P30945 X 2

TIP Suspension Mount Insert Chart

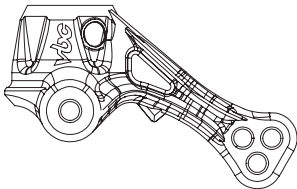


Composite Insert	Narrow	FR (Split Mount)								Wide
		5	4	3	2	1	2	3	4	
Narrow FF (Suspension Mount)	5	0	0.25	0.5	0.75	1	1.25	1.5	1.75	2
	4	-0.25	0	0.25	0.5	0.75	1	1.25	1.5	1.75
	3	-0.5	-0.25	0	0.25	0.5	0.75	1	1.25	1.5
	2	-0.75	-0.5	-0.25	0	0.25	0.5	0.75	1	1.25
	1	-1	-0.75	-0.5	-0.25	0	0.25	0.5	0.75	1
Wide FF (Suspension Mount)	2	-1.25	-1	-0.75	-0.5	-0.25	0	0.25	0.5	0.75
	3	-1.5	-1.25	-1	-0.75	-0.5	-0.25	0	0.25	0.5
	4	-1.75	-1.5	-1.25	-1	-0.75	-0.5	-0.25	0	0.25
	5	-2	-1.75	-1.5	-1.25	-1	-0.75	-0.5	-0.25	0



23

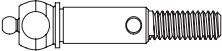
Front Suspension Assembly Part 3



Steering Block Composite X Silver A-03-P30898 x 2



Double Joint Bone for Xray, VBC 41.3mm
A-03-VBC-0069 x 2



Double Joint Axle Shaft
C-02-P30944 x 2



Double Joint Inner
C-02-P30940 x 4



Double Joint Lock Spring Ring C-02-P30943 x 4



Double Joint Case
C-02-P30942 x 2



Double Joint Pin 1.58 x 8.98 C-02-P30941 x 4



5x10x3mm Ball Bearing C-02-BB-1053-B x 2



5x10x4mm Ball Bearing C-02-BB-1005-P x 2



M2x10 Shaft Pin B-02-VBC-3035 x 2



M3x2 Set Screw C-02-SS-0302 x 2



Lightweight 0 Offset Hex Wheel Hub B-02-P30887 x 2



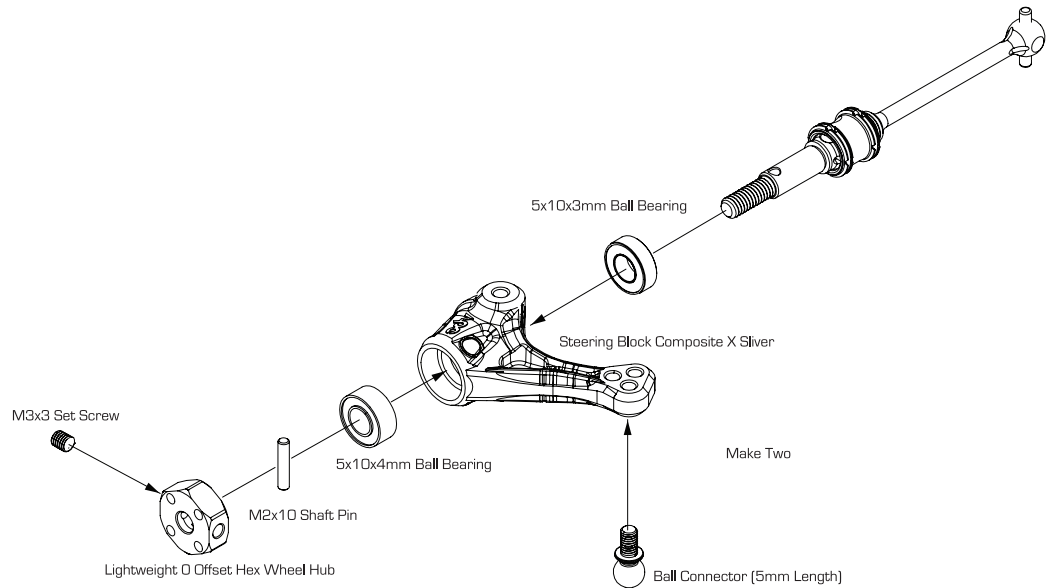
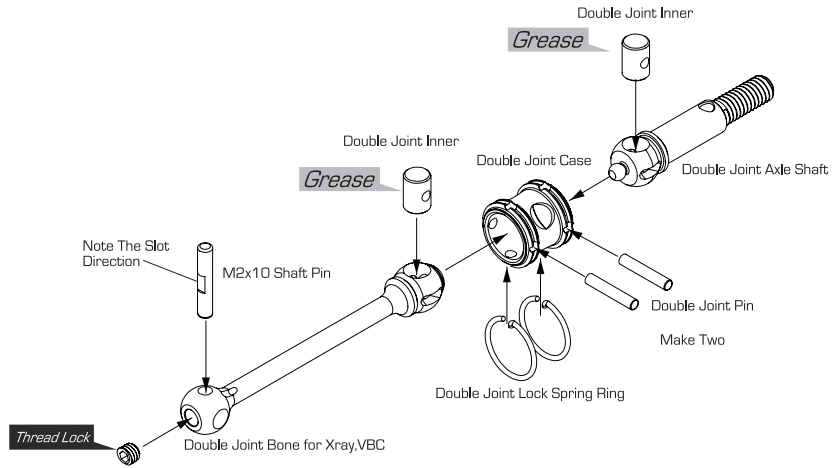
M3x3 Set Screw C-02-SS-0303



Ball Connector (5mm Length)
B-02-VBC-0021 x 2



M2x10 Shaft Pin B-02-VBC-0020 x 2

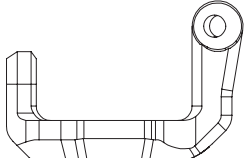


TIP Steering Block Composite Compound Chart

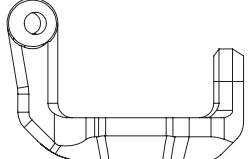
Steering Block Composite X Silver A-03-P30898	Steering Block Composite X Gold A-03-P30926 x 2
Hard	Ultra-Hard

24

Front Suspension Assembly Part 4



R C-Hub Composite X Sliver A-03-P30900 x 1



Left C-Hub Composite X Sliver A-03-P30901 x 1



Turnbuckle Cup A-03-VBC-0039 x 2



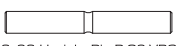
Turnbuckle Cup S A-03-VBC-0056 x 2



Ball Connector B-02-VBC-0045 x 2



M3x32mm Turnbuckle B-02-VBC-0036 x 2



3x23 Upright Pin B-02-VBC-0032 x 2



Steering Swivel Tube B-02-VBC-0033 x 4



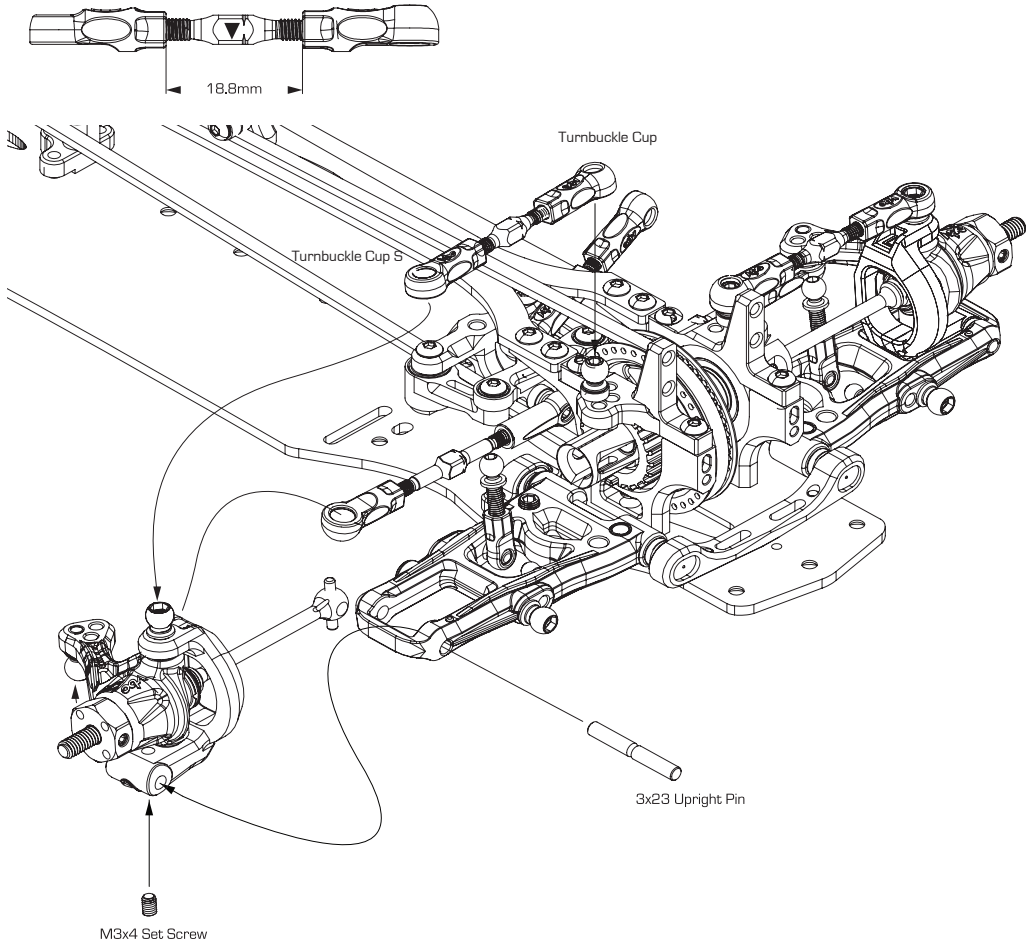
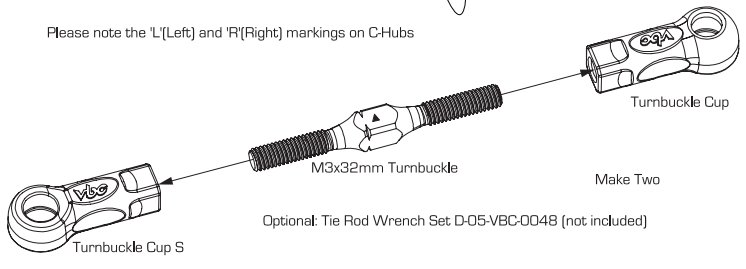
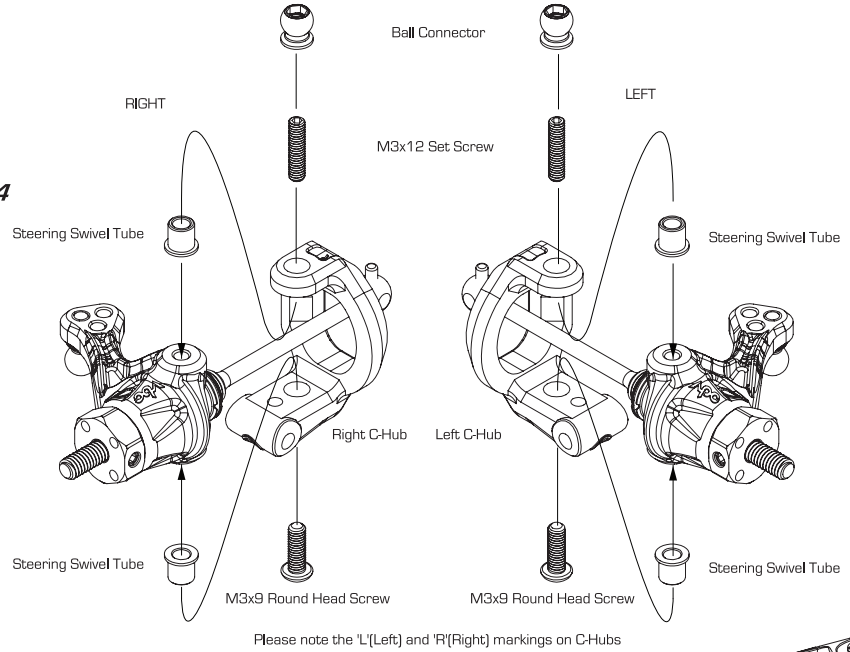
M3x12 Set Screw C-02-SC-SS-0312 x 2



M3x4 Set Screw C-02-SC-SS-0304 x 2

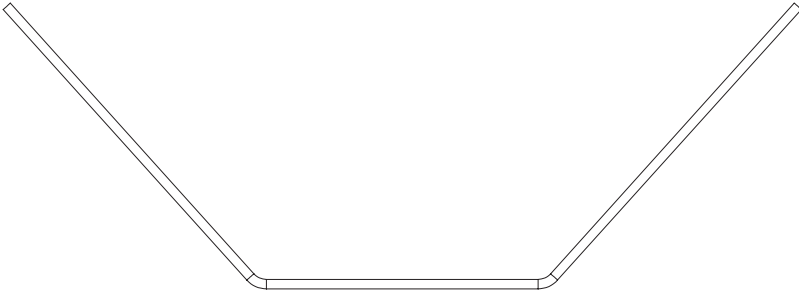


M3x9 Round Head Screw C-02-SC-R0309 x 2

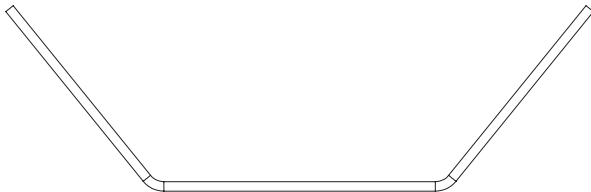


25

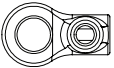
Front and Rear Stabilizers



Rear Stabilizer 1.3 C-02-P30249 x 1



Front Stabilizer 1.3 C-02-P30248 x 1



WildFireD07 Stabilizer Ball Cup A-03-P30150 x 4



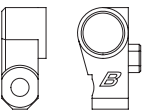
M3x3mm Set Screw C-02-SC-SS-0303 x 4



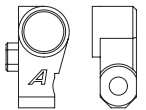
M3x4 Set Screw C-02-SC-SS-0304 x 4



Stabilizer Stopper B-02-P30813 x 2



Wildfire D08 Stabilizer Mount_B B-02-P30803 x 2

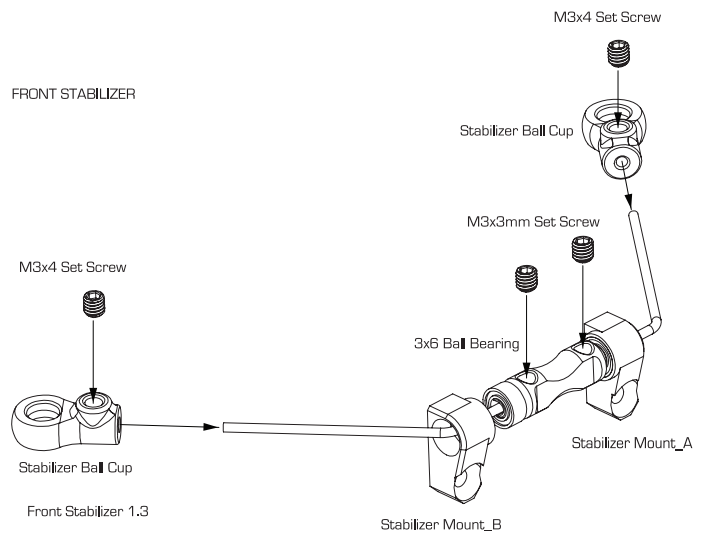


Wildfire D08 Stabilizer Mount_A B-02-P30812 x 2



3x6 Ball Bearing C-02-BB-0603 x 4

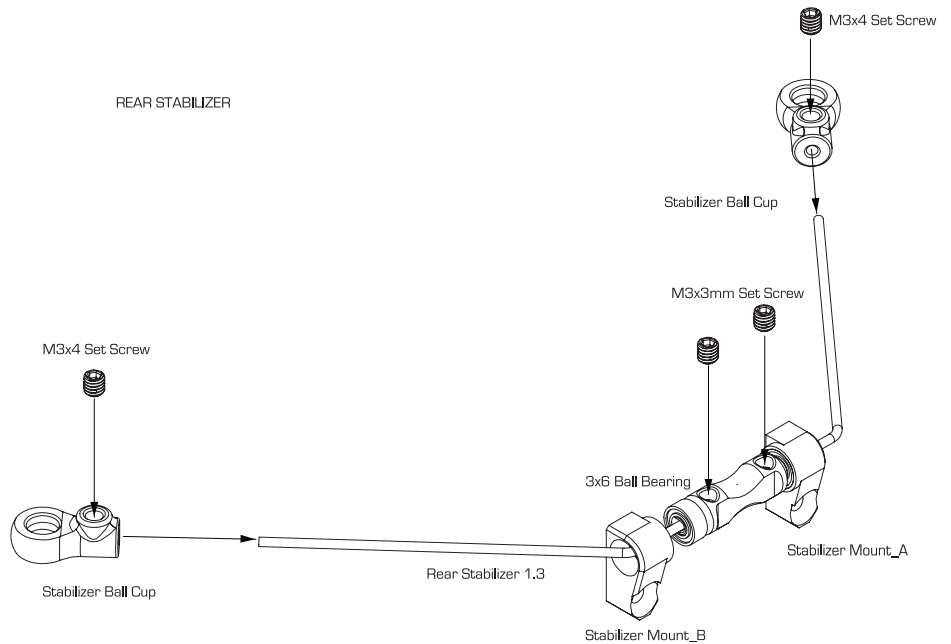
FRONT STABILIZER



Front Stabilizer 1.3

Optional:
 D07 Front Stabilizer 1.4 White C-02-G30252
 D07 Front Stabilizer 1.2 Green C-02-G30250

REAR STABILIZER



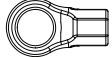


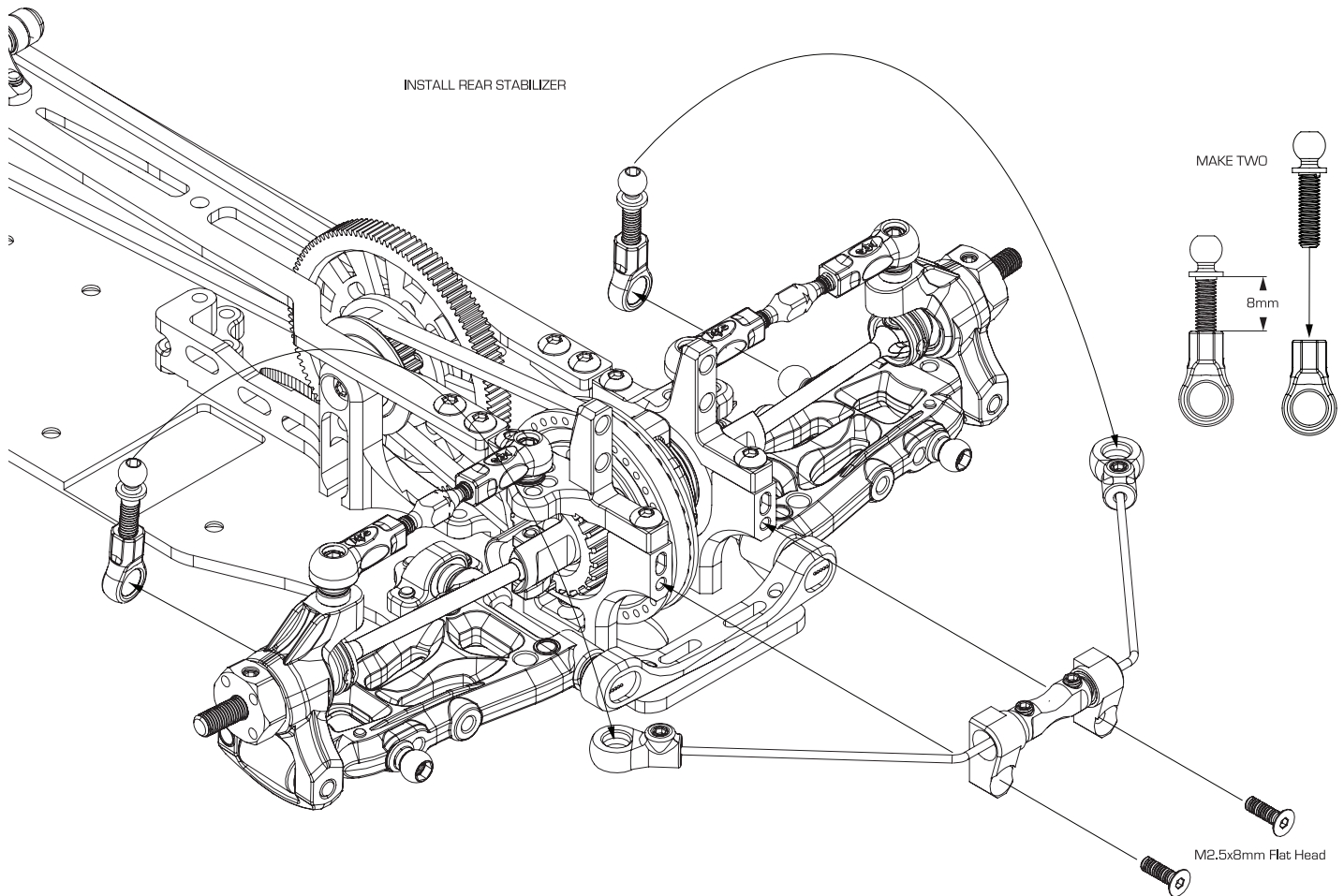
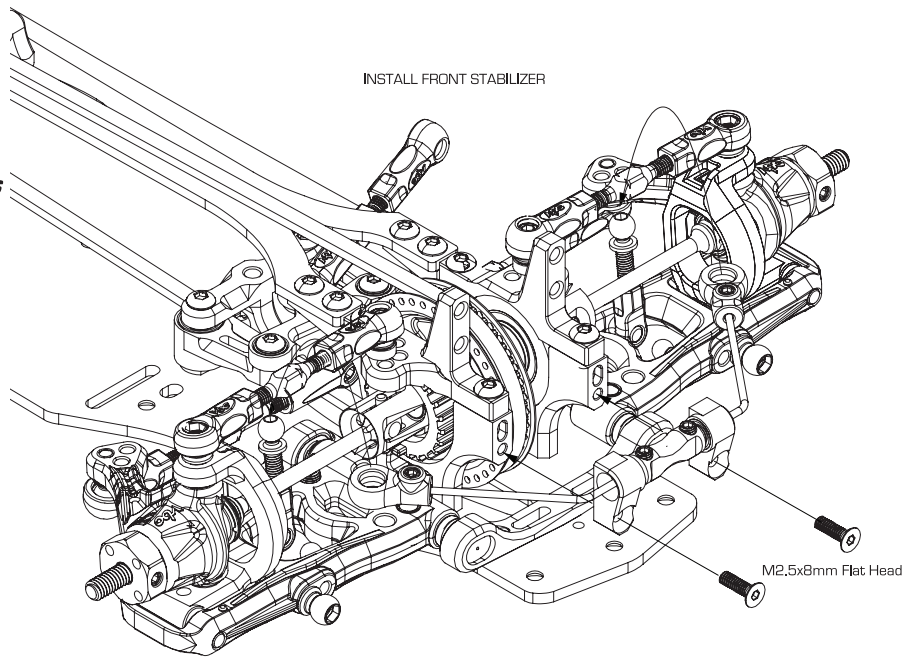
Optional:

D07 Rear Stabilizer 1.4 White Option C-02-G30253
 D07 Rear Stabilizer 1.2 Green Option C-02-G30251

26

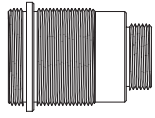
Install Front and Rear Stabilizers

-  M2.5x8mm Flat Head Screw C-02-SC-F0258 x 4
-  4.7x17mm Ballstud A-02-VBC-5092 x 2
-  Turnbuckle Cup Open Type L A-03-VBC-0041

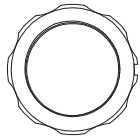


27

Assemble Oil Shocks



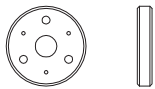
TBB Shock Body B-02-VBC-0120 x 4



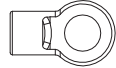
TBB Shock Height Adjuster B-02-VBC-0121 x 4



TBB Shock Bottom Cap A-03-VBC-0122 x 4



TBB Shock Piston (3 holes) A-03-VBC-0123 x 4



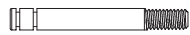
TBB Shock Bottom Connector A-03-VBC-0124 x 4



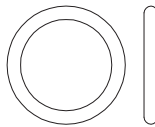
TBB Shaft Cap B-03-VBC-0125 x 4



TBB Shaft Guide A-03-VBC-0126 x 4



TBB Shock Shaft B-03-VBC-0127 x 4



Sealer O-Ring (Shock Height Adjuster) B-03-VBC-0128 x 4

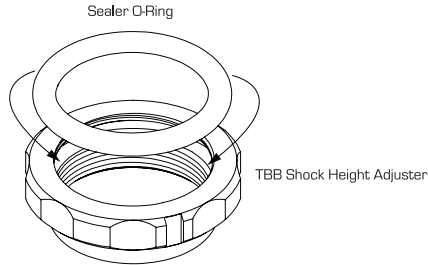


Shaft Sealer O-Ring B-03-VBC-0012 x 4



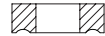
M2 E-Clip B-02-VBC-0129 x 8

MAKE 4 SHOCKS

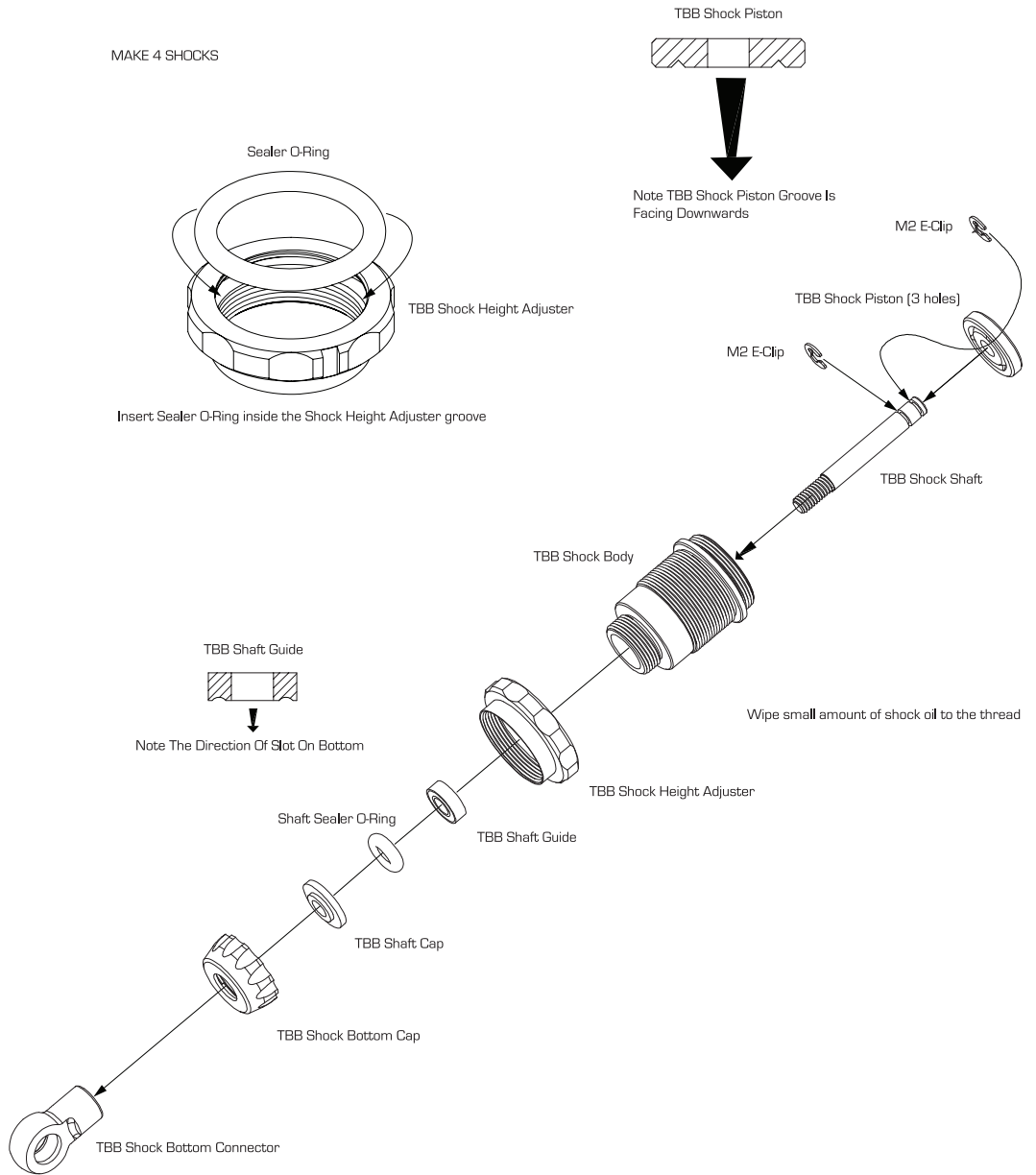


Insert Sealer O-Ring inside the Shock Height Adjuster groove

TBB Shaft Guide



Note The Direction Of Slot On Bottom



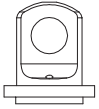
Wipe small amount of shock oil to the thread

Note the double ring face to ball connector

Make sure the shock shaft can move up and down freely

28

Assemble Oil Shocks Part 2



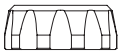
TBB Shock Top Connector A-03-VBC-0130 x 4



TBB Spring Bottom Support A-03-VBC-0131 x 4



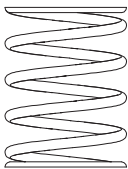
TBB Oil Sealer Cap (Medium Soft)
B-03-VBC-0132 x 4



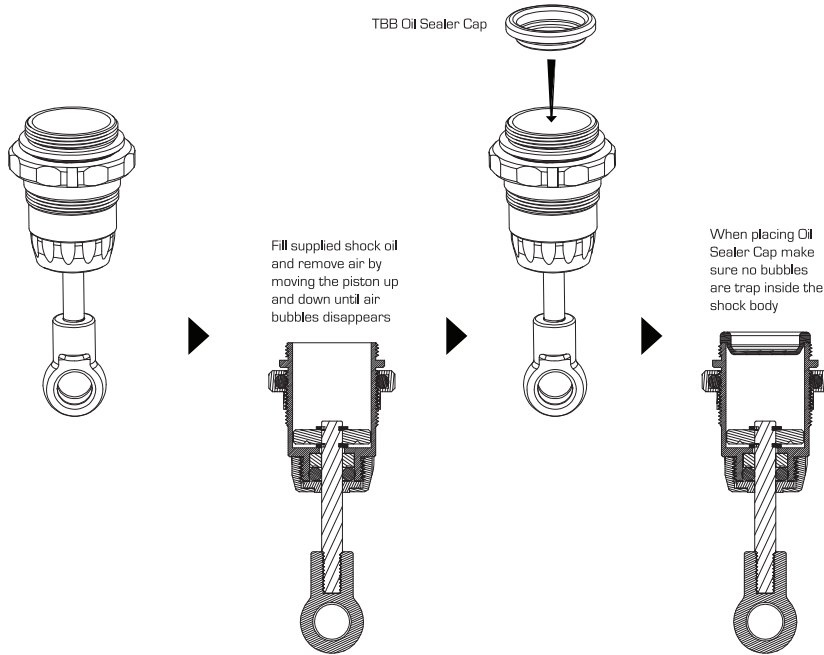
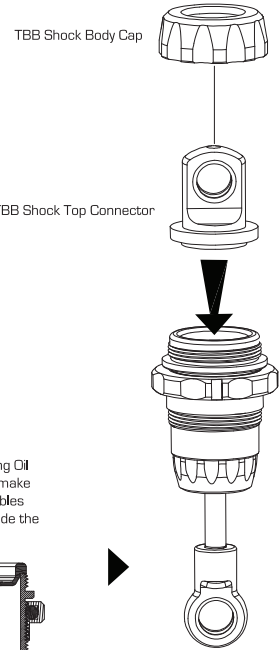
TBB Shock Body Cap B-02-VBC-0133 x 4



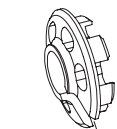
TBB Shock Spring
Orange-Med Hard (For Front)
B-02-VBC-0133 x 2



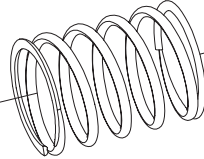
TBB Shock Spring
Red-Med Soft (For Rear)
B-02-VBC-0134 x 2



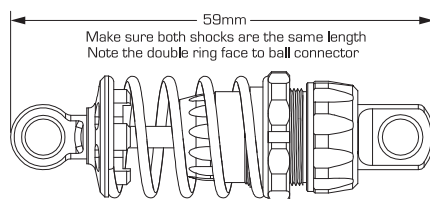
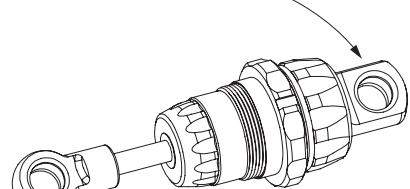
TBB Spring Bottom Support



Shock Spring Orange (For Front)
Shock Spring Red (For Rear)



Note the double ring face to ball connector

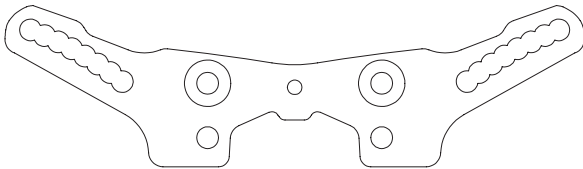


VBC Racing TBB Shock Springs:
 TBB Shock Spring (Green - Soft) B-02-VBC-0136
 TBB Shock Spring (Red - Med. Soft) B-02-VBC-0134
 TBB Shock Spring (Orange - Med. Hard) B-02-VBC-0135
 TBB Shock Spring (White - Hard) B-02-VBC-0137

Color	Green B-02-VBC-00136	Red B-02-VBC-00134	Orange B-02-VBC-00135	White B-02-VBC-0137
Rate lb/in	13.30	14.40	16.20	17.10
Rate gf/mm	238	273.2	301.8	320
Coils	6.50	6.25	6.00	5.75

29

Install Front Shocks



WildFireD08 Graphite Front Shock Tower
A-01-P30801 x 1



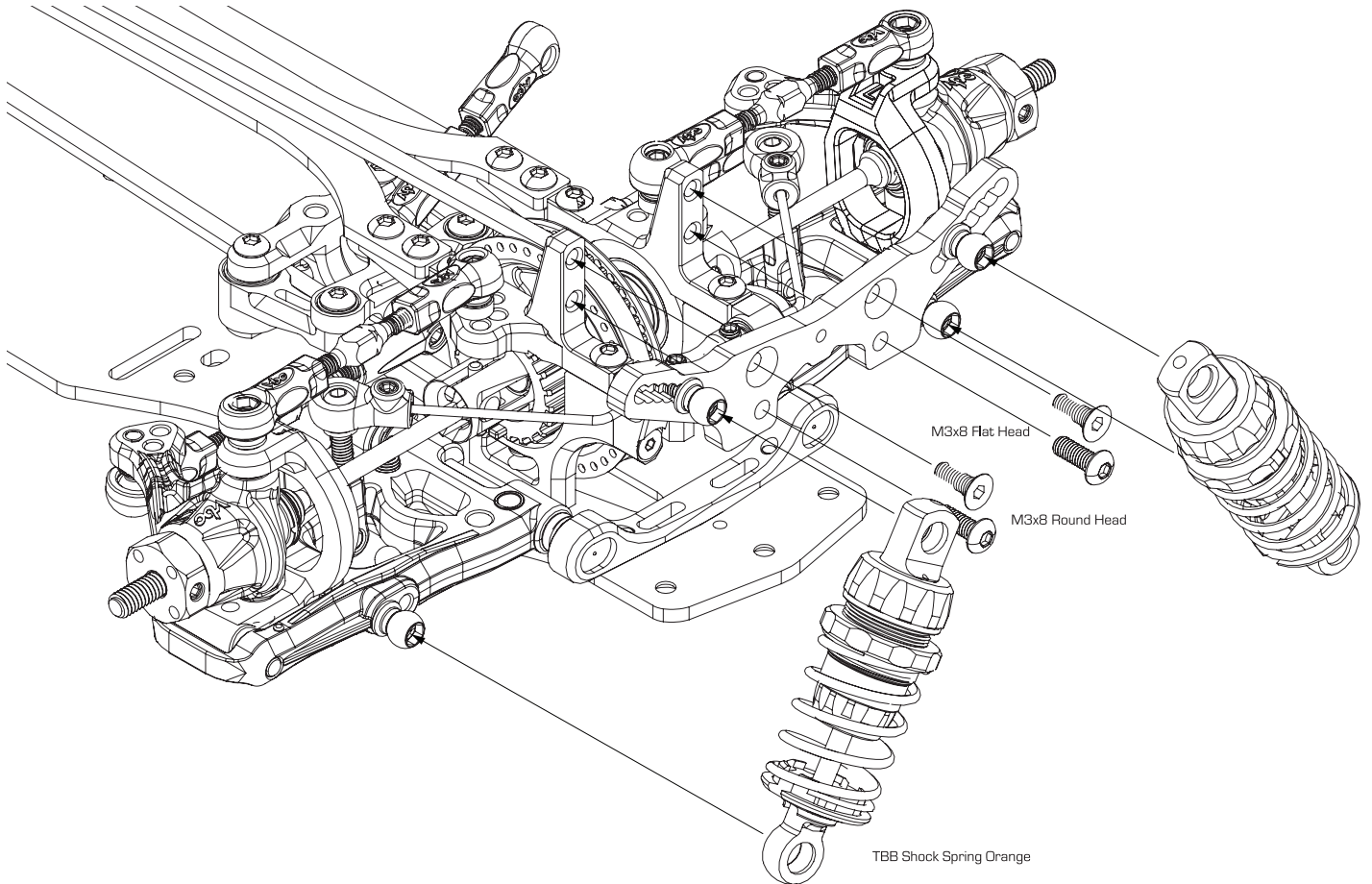
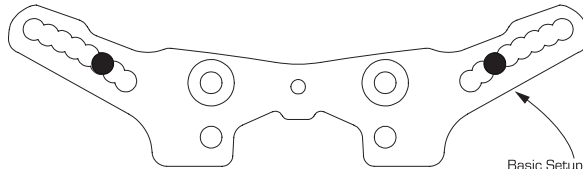
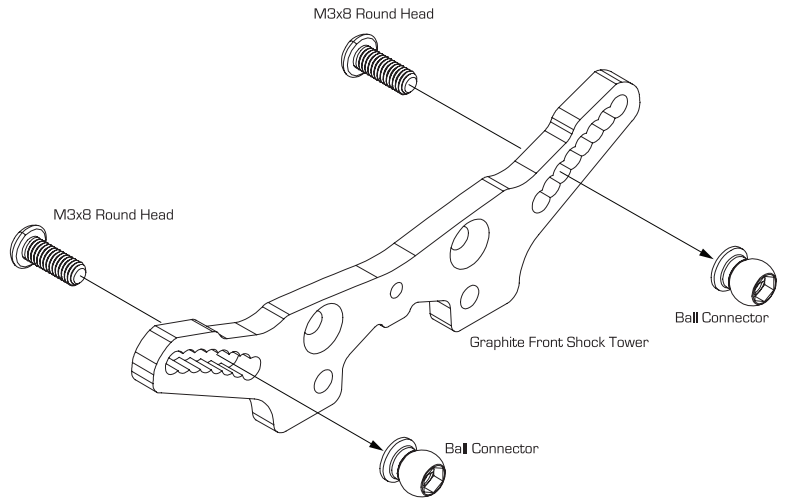
Ball Connector B-02-VBC-0045 x 2



M3x8 Round Head Screw C-02-SC-R0308 x 4

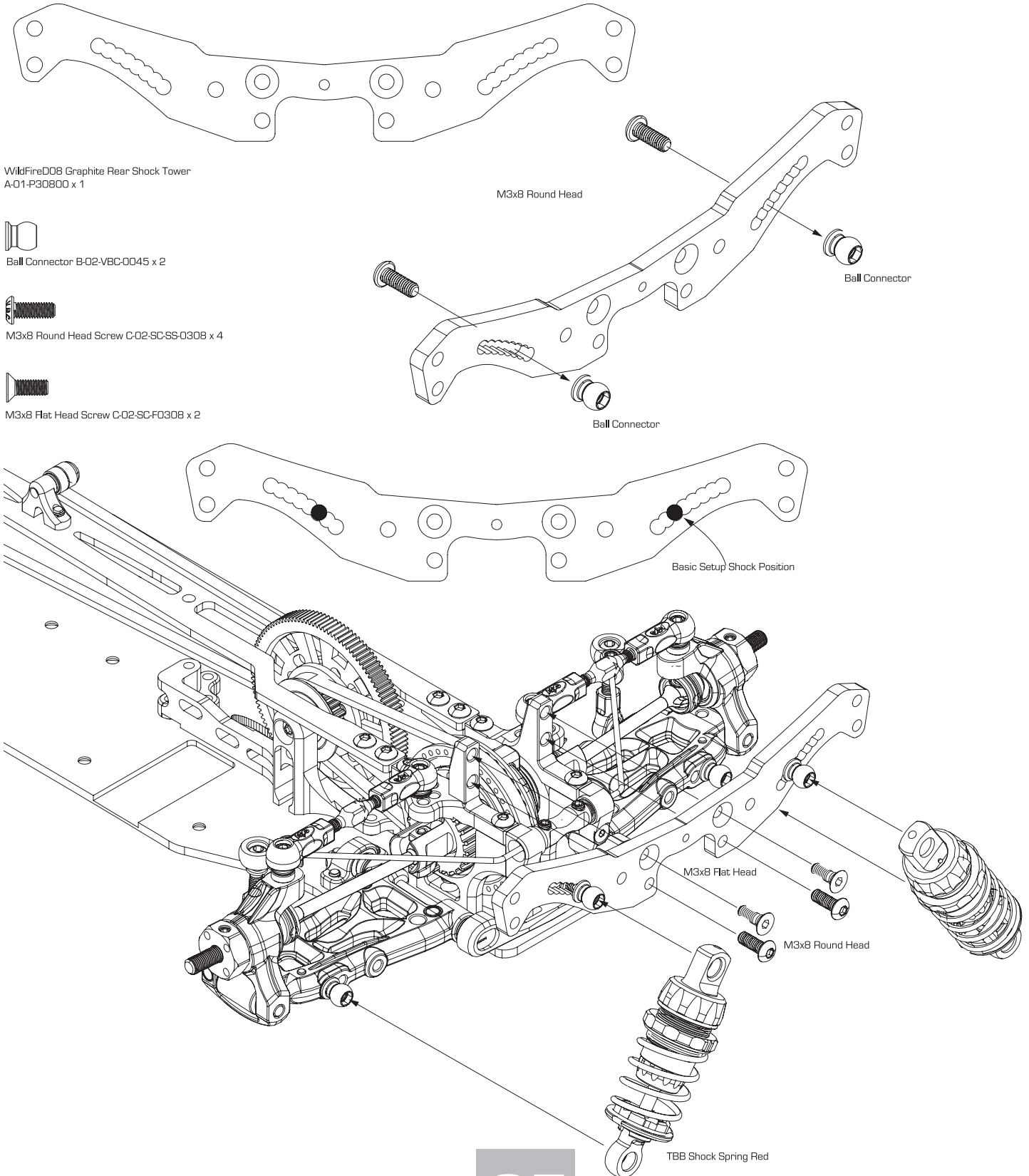


M3x8 Flat Head Screw C-02-SC-F0308 x 2



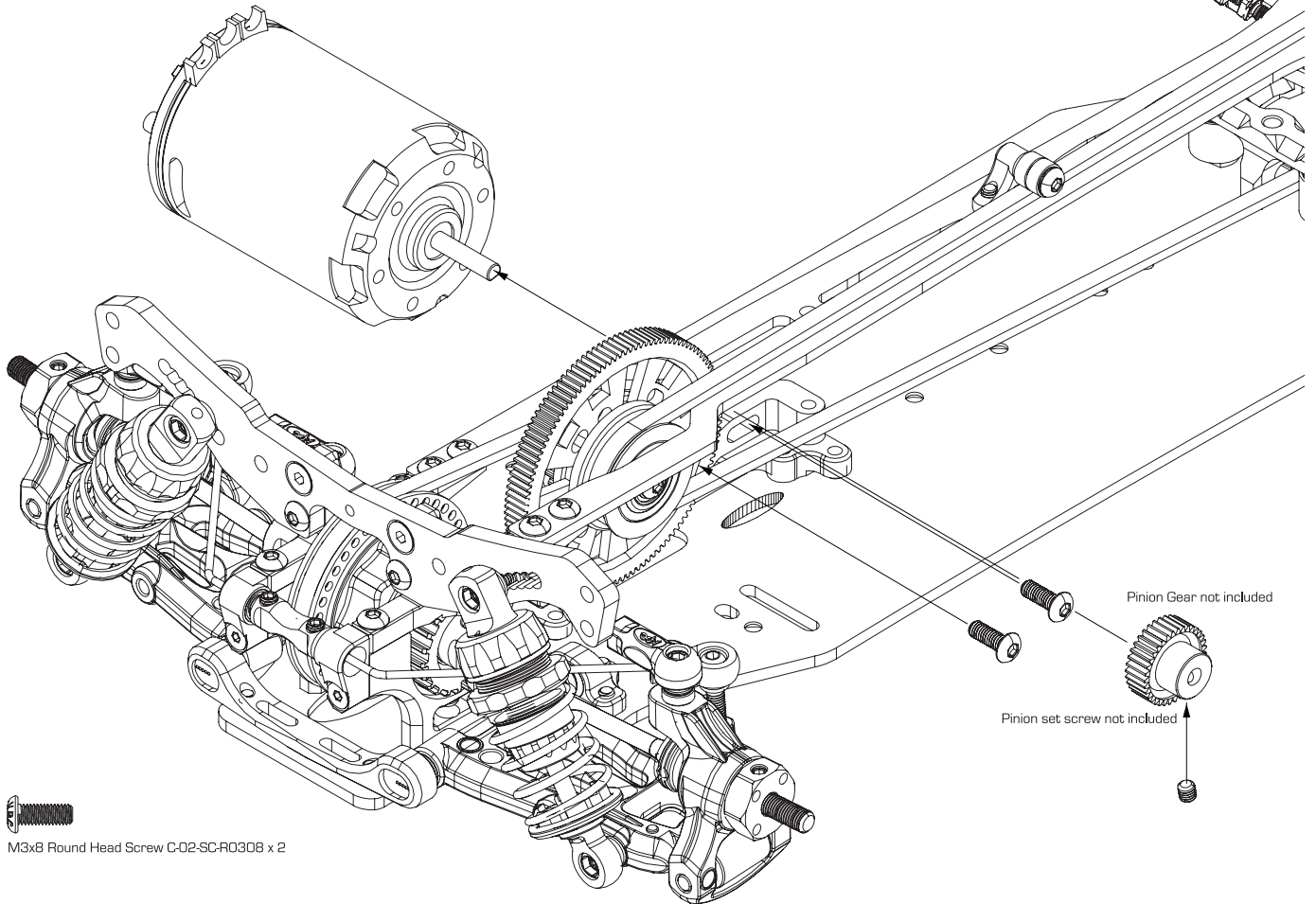
30

Install Rear Shocks



31

Install Motor



M3x8 Round Head Screw C-02-SC-RD308 x 2

32

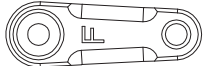
Install Steering Servo



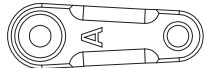
WildFire Center Servo Mount
D-05-VBC-0089 x 1



Servo Spacer 2mm A-03-VBC-0033 x 2
Optional Servo Spacer 1mm A-03-VBC-0032 x 2 included



Servo Horn Type F (Futaba)
A-03-VBC-0053 x 1



Servo Horn Type A (Airtronics/KO)
A-03-VBC-0054 x 1



M3x8mm Round Head Screw C-02-SC-R0308 x 5



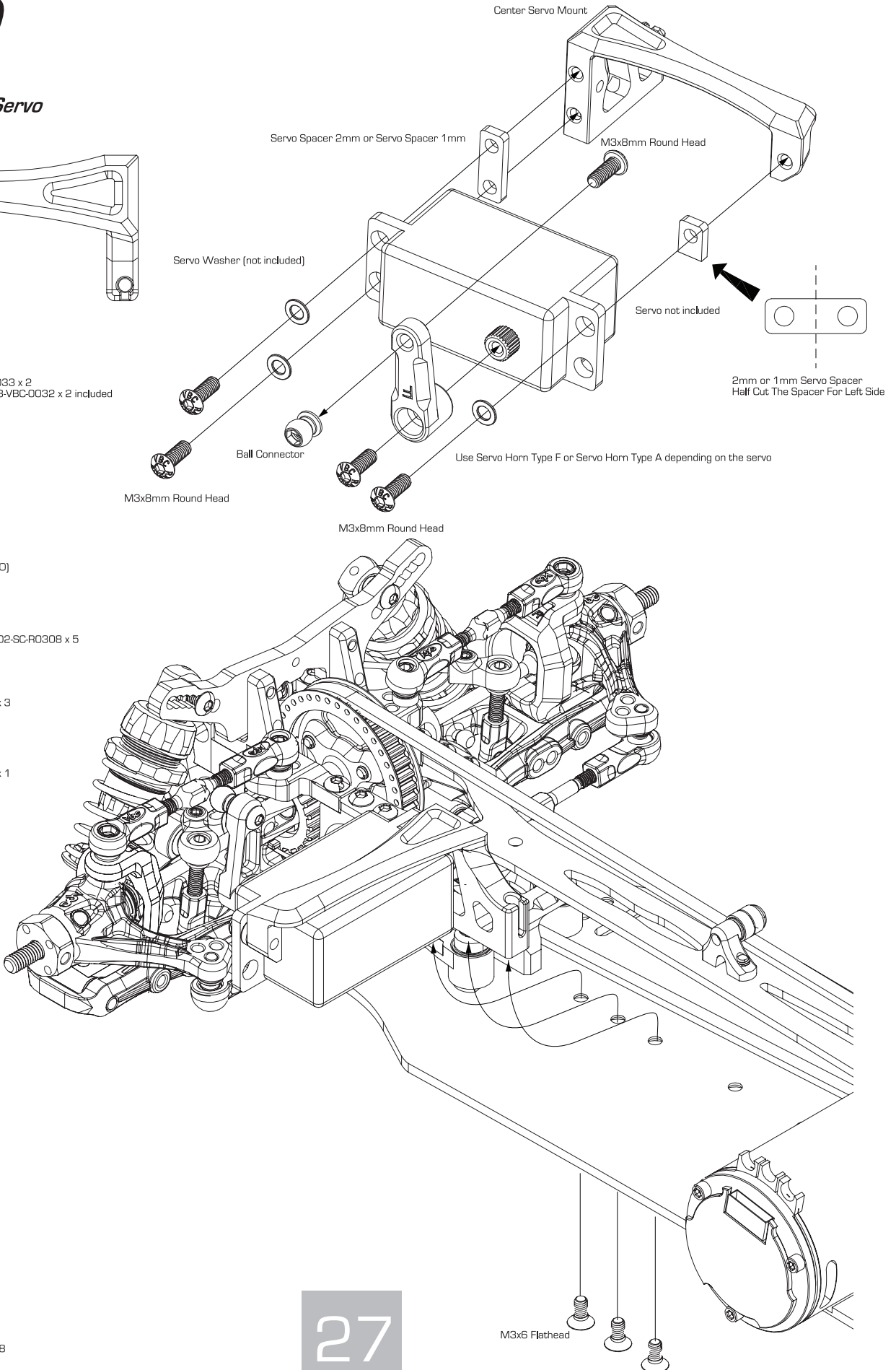
M3x6 Flathead C-02-SC-F0306 x 3



Ball Connector B-02-VBC-0045 x 1



Servo Washer (not included) x 3

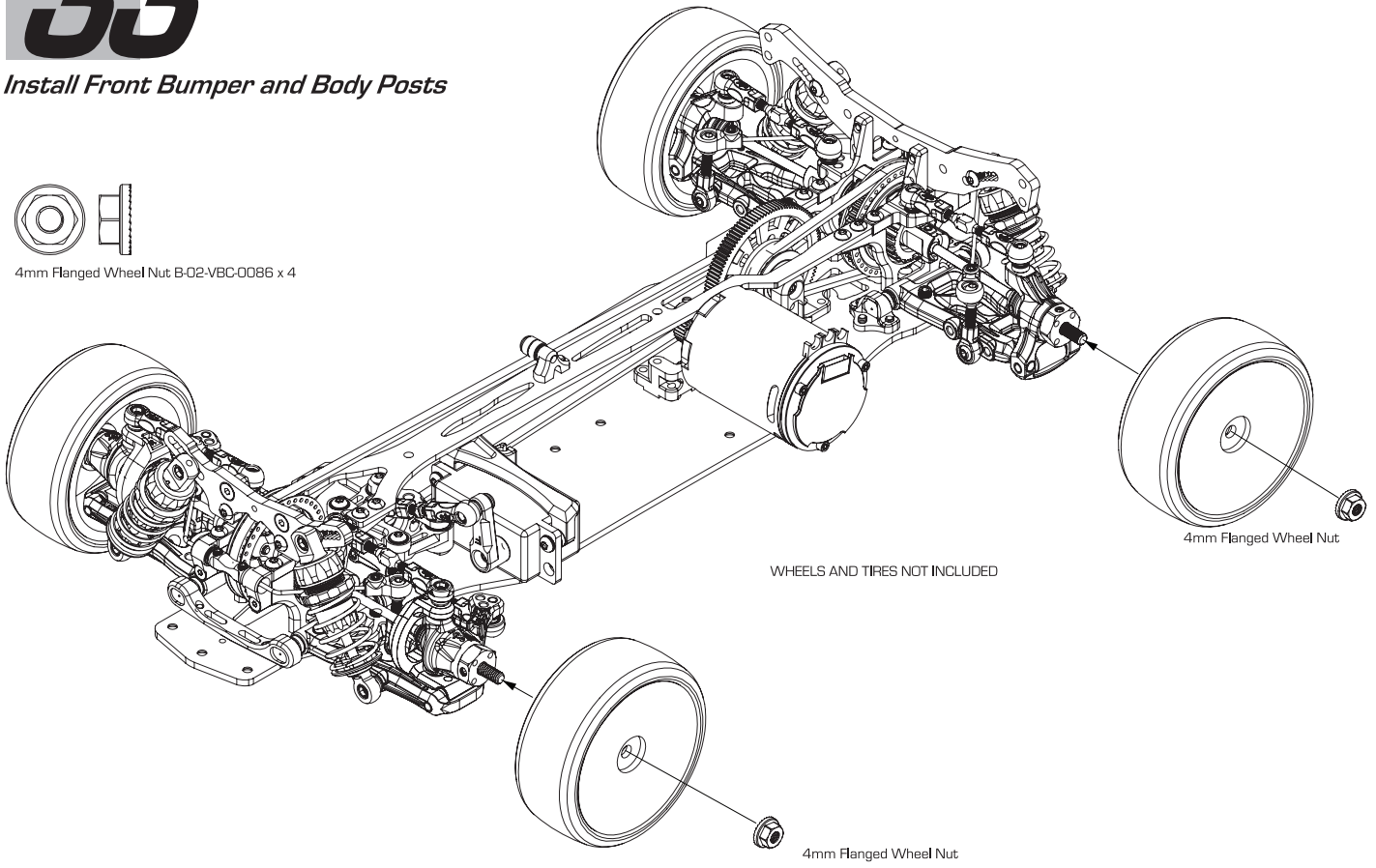


33

Install Front Bumper and Body Posts



4mm Flanged Wheel Nut B-02-VBC-0086 x 4



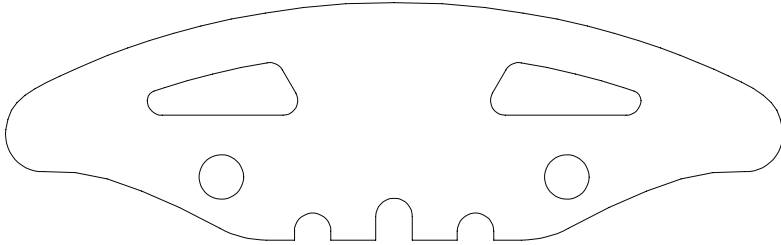
WHEELS AND TIRES NOT INCLUDED

4mm Flanged Wheel Nut

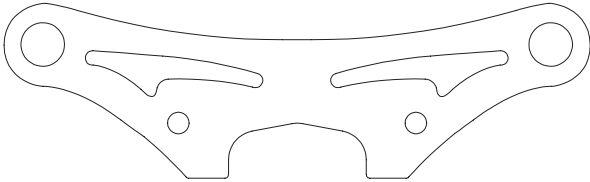
4mm Flanged Wheel Nut

34

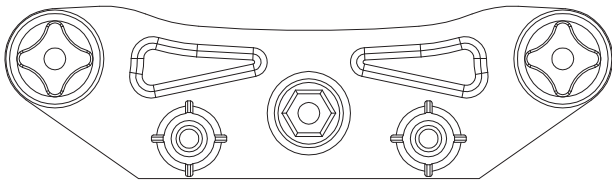
Install Front Bumper Part 2



Front Foam Bumper B-03-VBC-0009 x 1



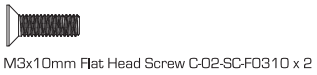
Graphite Bumper Top Plate A-01-P30950 x 1



Bumper Top Plate A-03-VBC-0011 x 1



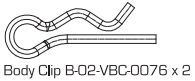
M3 Lock Nut C-02-SC-NN03 x 1



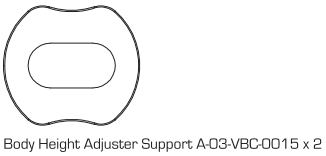
M3x10mm Flat Head Screw C-02-SC-F0310 x 2



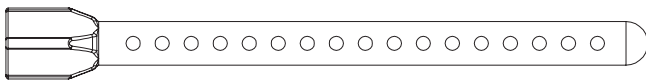
M2x12 Shaft Pin B-02-VBC-0022 x 2



Body Clip B-02-VBC-0076 x 2



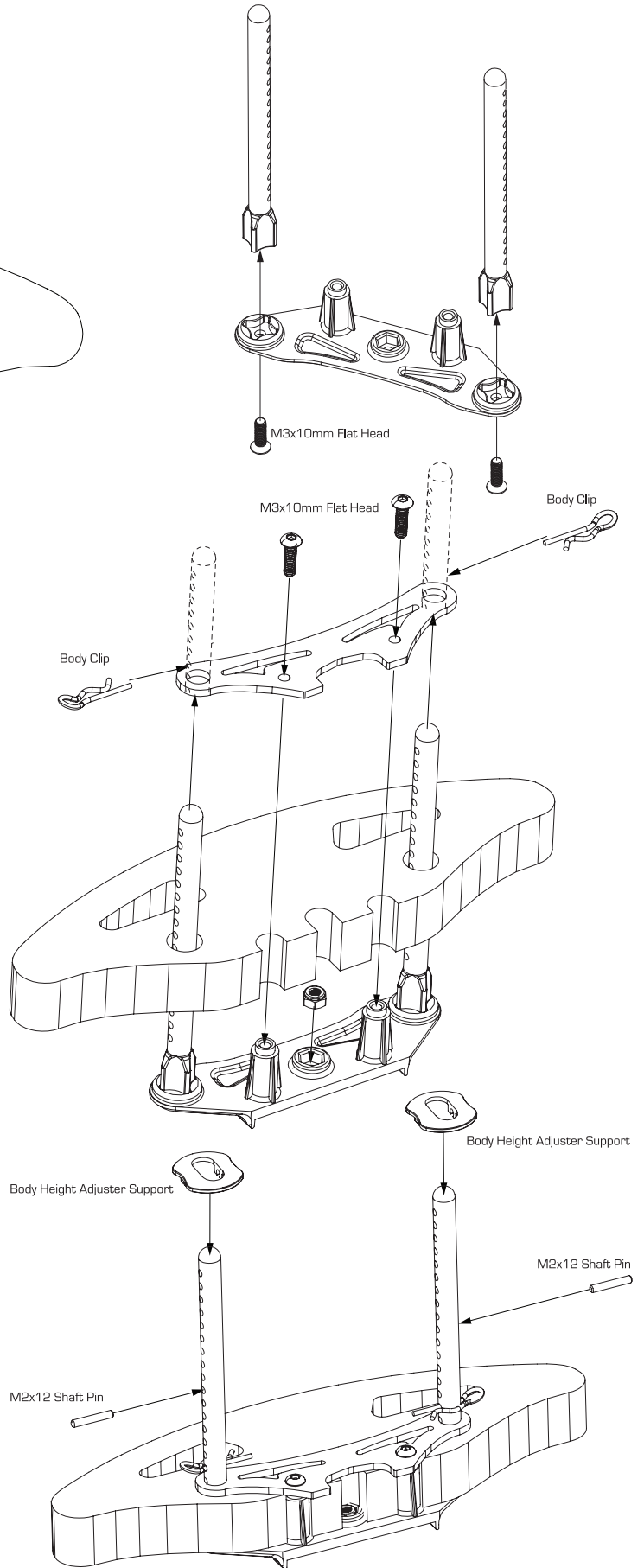
Body Height Adjuster Support A-03-VBC-0015 x 2



Front Body Post A-03-VBC-0013 x 2

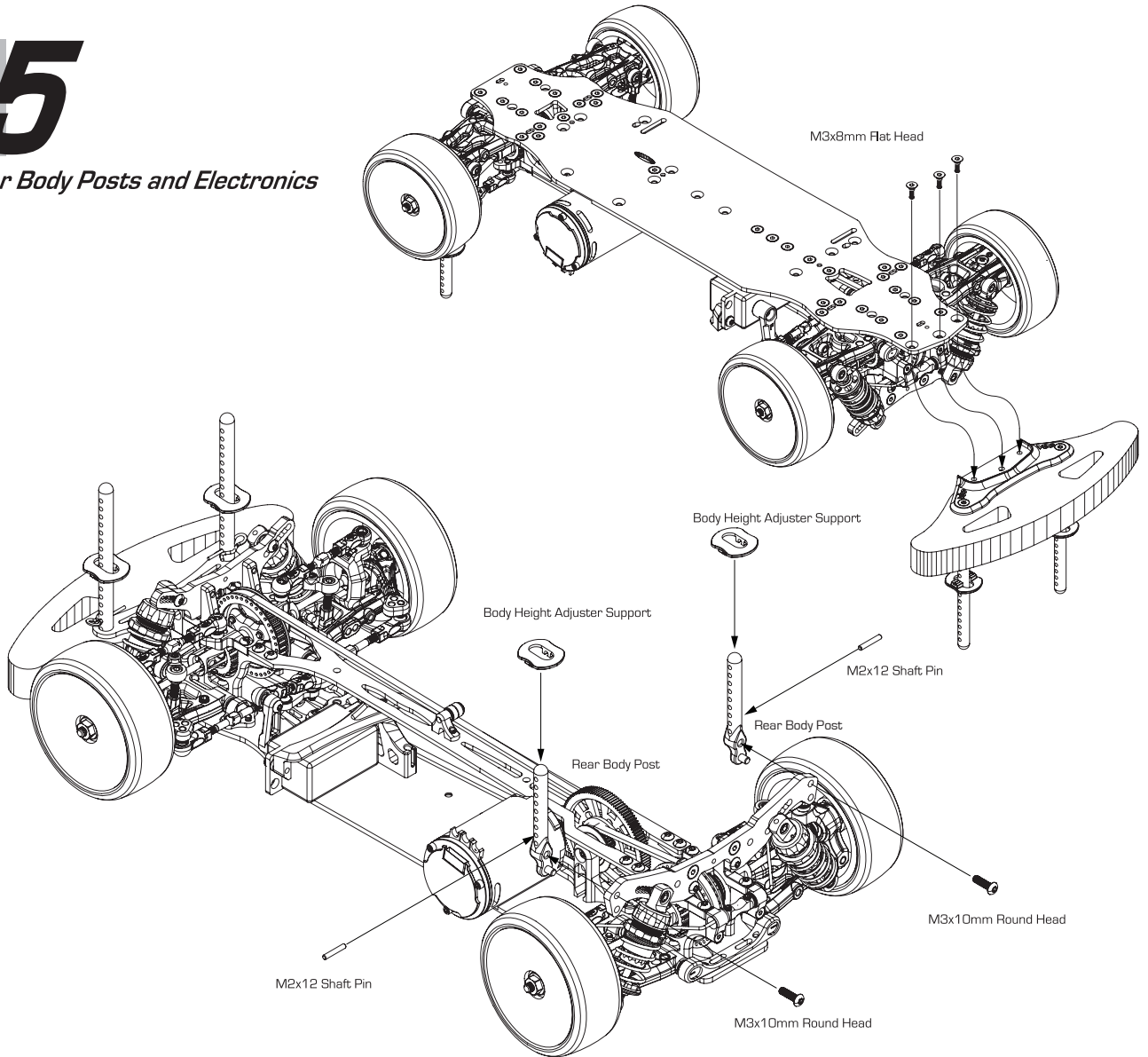


M3x10mm Round Head Screw C-02-SC-R0310 x 2

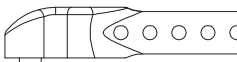


35

Install Rear Body Posts and Electronics




M3x8mm Flat Head Screw C-02-SC-F0308 x 3




Rear Body Post A-03-VBC-0014 x 2



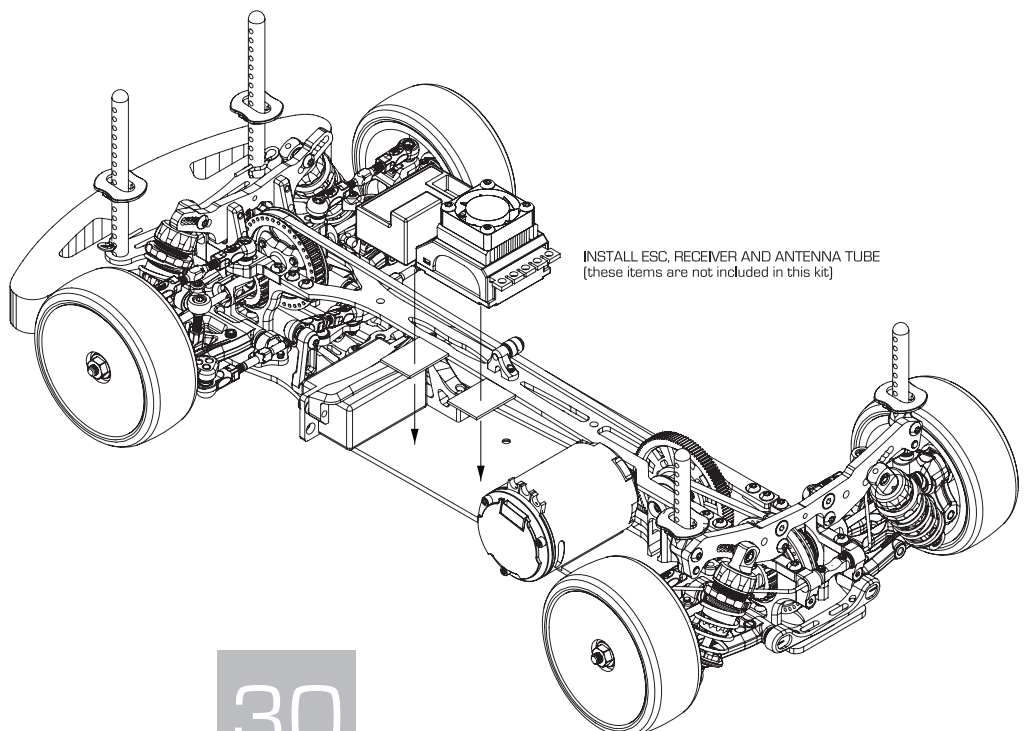
M3x10mm Round Head Screw C-02-SC-R0310 x 2



M2x12 Shaft Pin B-02-VBC-0020-12 x 2



Body Height Adjuster Support A-03-VBC-0015 x 2



35

Install Battery Guards



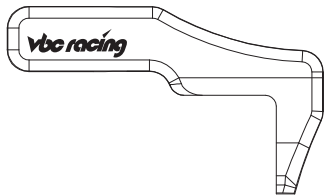
Plastic Washer A-03-VBC-6073 x 1



M3x10mm Flat Head Screw
C-02-SC-F0310 x 1



M3x6 Flathead C-02-SC-F0306 x 2



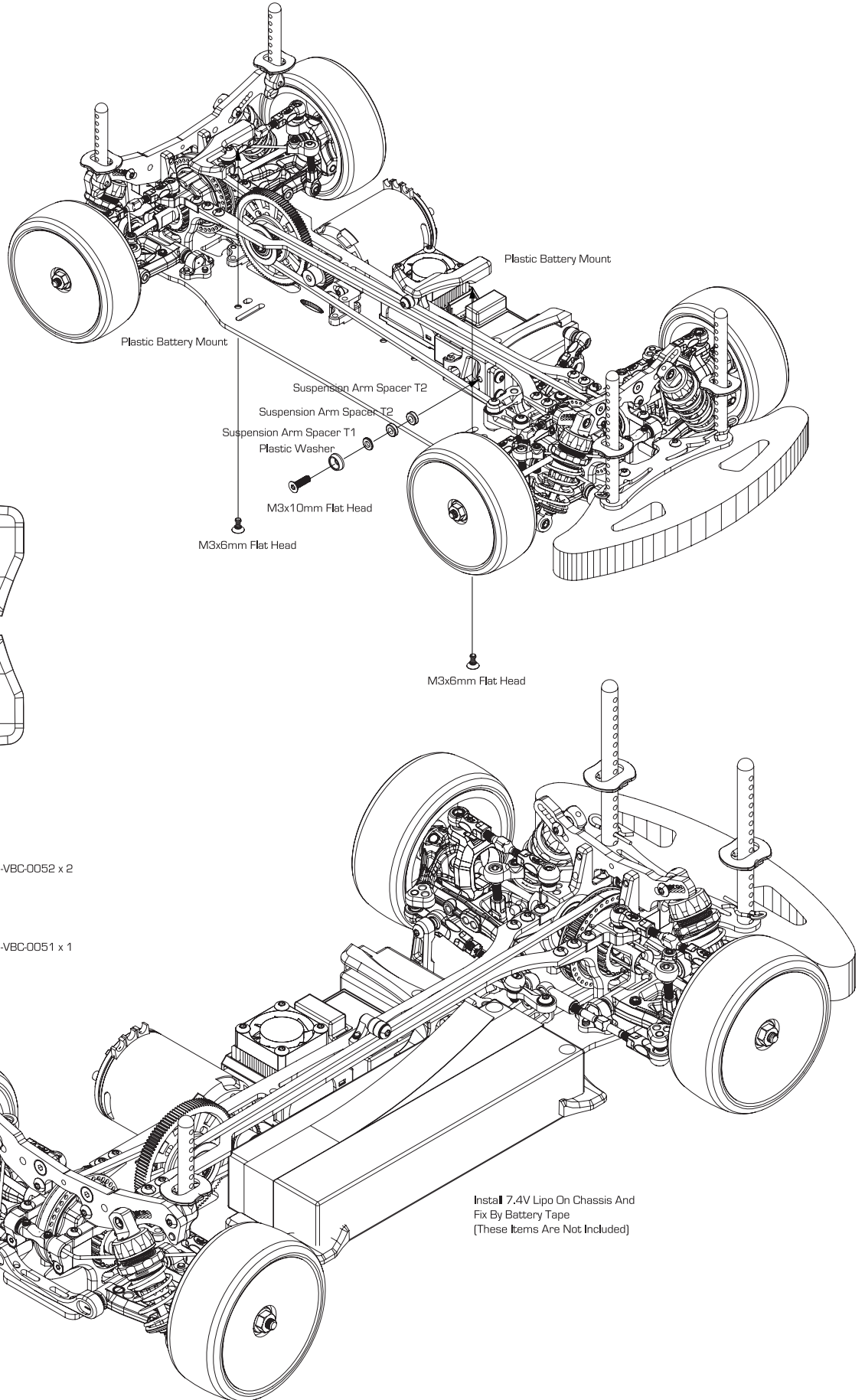
Plastic Battery Mount A-03-VBC-3025 x 1



Suspension Arm Spacer T2 Composite A-03-VBC-0052 x 2



Suspension Arm Spacer T1 Composite A-03-VBC-0051 x 1



Install 7.4V Lipo On Chassis And
Fix By Battery Tape
(These Items Are Not Included)



COMPETITION GRADE HIGH PERFORMANCE RADIO CONTROL RACING CAR CHASSIS KIT

WILDFIRE D08

1/10 4WD ELECTRIC COMPETITION TOURING CAR KIT